



ice



User's Guide

Professional/Standard Editions

Version
5

“Excellent”
“Editor’s Choice”
“5 Star Award”
“Editor’s Pick”
“Excellent Software”

25 Awards and Honors



Loqu8 iCE is the favorite tool
for understanding and learning Chinese for over 3000 users in 22 countries



Learn more.
Learn faster.

Table of Contents



Loqu8 iCE, Version 5.1

User's Guide - Professional/Standard Editions

Revision D

Copyright © 2008-2009 Loqu8, Inc. All rights reserved worldwide. No portion of this document may be reproduced in any form, by any means or translated into any language in any from by any means without prior written permission from Loqu8.

Photos: Shanghai (Pudong) Airport and National Taiwan University (NTU)

Chapters

1. What Can iCE Do?	4
2. Installation	10
3. Starting iCE	13
4. Quick Tour	21
5. Instant, Pop-Up Translation	25
6. Pronunciation and Phonetics	29
7. Dictionary Lookup	32
8. Copy	38
9. Search/Link to Web	40
10. Adding New Entries	41
11. Learning Tools	49

Appendices

A. Technical Support	51
B. Windows Vista Tips	52
C. Windows XP Tips	53
D. Download Security	55
E. iCE Import Formats	56
F. Removing iCE	57
G. Glossary	59
H. License Agreement and Warranty	60
I. About Loqu8, Inc.	63

What Can iCE Do?

Loqu8 iCE, iNterpret Chinese-English, scans Chinese text and translates it into English *as you move your mouse*. Instead of opening another window or application, iCE's pop-up LiveScan window provides immediate reference. Both Standard and Professional Editions allow you to quickly read, understand and learn Chinese:

- Scan the latest news from China, Taiwan or Hong Kong. English translations are shown immediately as you move your mouse over the Chinese words
- Listen to words pronounced in Mandarin Chinese. Follow along with phonetics in Pinyin or Bopomofo
- Copy and quickly paste Chinese with English translations into your email or Microsoft Office documents (Word, Excel, PowerPoint, Outlook, Access)
- Easily search popular websites, like Google or Wikipedia, using selected Chinese characters (without re-typing Chinese!)
- Lookup words in the 84,000+ word Chinese/Pinyin-English dictionary. Show definitions and brief descriptions. Proper nouns (popular names, organizations, government programs)

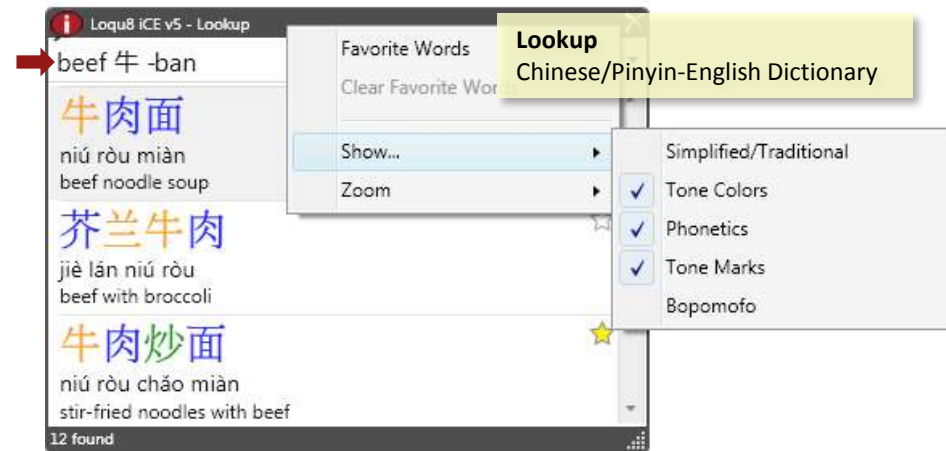
New Features in iCE Version 5.1

Loqu8's newest version of iCE is based upon feedback from our loyal customers. iCE Version 5 features an updated iNtuition engine to power these features:

- **Menus** have been streamlined to improve access to features--especially on displays with lower-resolutions
- **Tone colors** will help you identify tones at-a-glance, Chinese characters are color-coded to each of the 5 Mandarin tones (including neutral). This may be enabled/disabled from the Option Menu. Choose View>Tone Colors
- **New Word** sub-menu lets you suggest additions and changes to the underlying definitions used by iCE



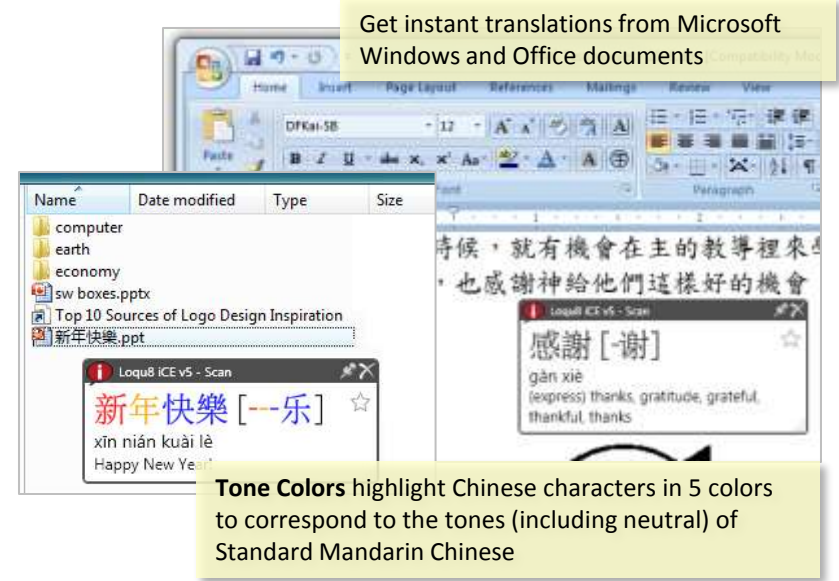
Scan
Instant Chinese-English
Translation/Pronunciation



Lookup
Chinese/Pinyin-English Dictionary

- **HighlightScan** can now be toggled on/off; if you have problems with copying text (Ctrl-C) in your other applications, turn HighlightScan off from the Option menu, by un-checking HighlightScan
- **Clear Favorite Words** lets you clear the list of all the words tagged as a favorite (yellow star)
- **Expanded Chinese/Pinyin-English dictionary** now includes over 84,000 entries, including names of political leaders, entertainers, athletes, companies and consumer products.

Performance and compatibility improvements have been made in the Loqu8 License Manager and applications developed with Borland Delphi.



Get instant translations from Microsoft Windows and Office documents

Tone Colors highlight Chinese characters in 5 colors to correspond to the tones (including neutral) of Standard Mandarin Chinese



韩厨集中营

· 幸福的初恋回忆：那年夏天

· 《食色性也》

· 《桃色》

· 《黑》

· 《杀》

· NO.1喜剧片《头师父一体》


幸福

xìng fú

blessed / happiness / happy

Loqu8 iCE v5 - Scan

- Pronounce Ctrl+S
- Copy Ctrl+C
- Copy Entries
- Lookup Ctrl+F
- Word
- Search



Sound

Hearing Chinese with text-to-speech (TTS) makes learning Chinese easier than ever

Educators and corporate users will appreciate the custom features available in **iCE Professional Edition**. This new configuration of iCE has all the features of the Standard Edition, plus the ability to personalize and manage words and definitions for an individual, class or workgroup. Right-click on Chinese characters and enter your own translation and usage notes **[A]**. For the first time, custom English translations and personal notations may be defined by any user for any Chinese character or phrase—as fast as you move your mouse **[B]**.

With information constantly changing, you need tools to quickly understand the Asian marketplace and economic trends. Instead of waiting for updates to your printed or electronic dictionary, iCE Professional lets you immediately add new words and definitions. New entries may be added interactively (one word at-a-time) or from a formatted text list. Groups of entries can be selectively enabled as a resource and shared with other Loqu8 iCE Professional users **[C]**.

Other language learning systems teach Chinese using a limited set of words and fixed definitions. Loqu8 iCE is different. Immerse yourself in what you want to read (websites, emails, documents) and let iCE show you Chinese-English translations through a pop-up window. Focus your study only on topics and meanings that are important to you, your organization or your industry. When study time is limited, iCE's intuitive teaching style is more effective and efficient.

- As new celebrities and political figures become known, quickly add their names as a new **entry**
- Tracking Chinese companies and products? Define a custom translation to include any relevant information (stock symbol, financial statistics, key contacts and more)
- Save your entries as **resources** that can be shared with others
- Import resources into a flashcard program for focused study and recall

iCE uses a centralized Chinese/Pinyin-English resource for both translations (LiveScan) and lookup (dictionary). In the Professional Edition, add or edit definitions and make them immediately available. For example, adding *Shanghai Stock Exchange* to the resource called *Business* means a lookup for SSE will show the translation with complete Chinese, Pinyin phonetics and pronunciation.

iCE Professional features are highlighted in this document with the gray tab and annotation notes →



A **resource** is a collection of entries (definitions and descriptions). Organize your entries by category (e.g., Celebrities, Business, Web, Personal) gives you the flexibility to enable, delete or export resources. Resources are controlled by the *Resource Manager*.

For more information, see Chapter 10 (Adding New Entries).

Comparing Editions



	ICE Professional Edition	ICE Standard Edition
Read, understand and learn Chinese		
Chinese/Pinyin-English dictionary	Over 80,000 entries	Same
Instant, pop-up English translations	Hover over Chinese for instant English translations	Same
Learn as you use popular applications	Web, email, MS Office (Word, Excel, PowerPoint, et al.)	Same
Lookup Chinese/Pinyin or English words	Advanced search with wildcards	Same
Learn with Chinese flashcard programs	Exports to ZDT	--
Custom entry/definition		
Add new entries (words and phrases)	Up to 10,000	--
- Simplified/traditional Chinese characters	Yes	--
- Pinyin with tone marks/numbers	Yes	--
- English/Chinese definition	Yes	--
- Group entries by resource	Yes	--
Pronounce entries in Mandarin	Yes	--
Manage resources (groups of entries)		
Selectively enable/disable (hide) resources	Yes	--
Share resources with other ICE Pro users	Yes	--
Export resources into formatted text file	Yes (unlimited)	--
Add/edit text file	Any text editor	--
Import text file into new resource	Yes (10,000 entries per resource)	
Merge text file into existing resource	Yes	--
Pricing and upgrades (USD)		
Retail price	\$99	\$59
Upgrade to Professional Edition	--	\$40



我敢打赌看电视转播的观众，都不知道这幅画原来是这样的。

Zoom fonts larger for improved legibility

Highlight multiple characters for fast translations --in context

Pin down translation window

Personalize your window by resizing manually or auto-size to content

iCE Version 5 accommodates a wider range of users and environments.

Zoom the font smaller to minimize the space it takes on your smaller notebook display or enlarge the font to show details of Chinese characters.

Pin down the translation window to a corner of your display (ideal for users with multiple monitors). Size of this window or let the program auto-size the window based on the content.

The new **HighlightScan** mode makes it easier to understand several words in context at one time. Just highlight all the Chinese characters and let iCE show you the Pinyin and English translations. Select all the characters (Ctrl-A) and choose Pronounce to hear the selection read aloud.

Many programs can translate Chinese into English, but iCE's innovative pop-up window adds a powerful, interactive dimension to learning.

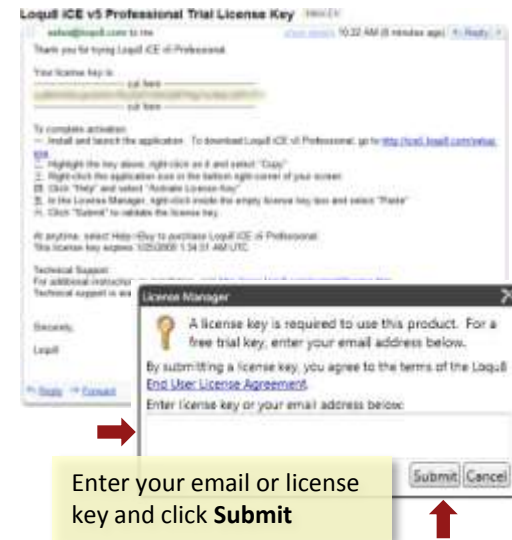
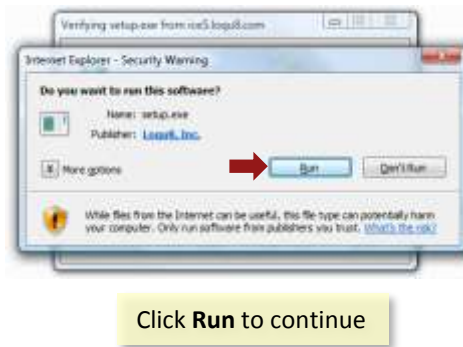
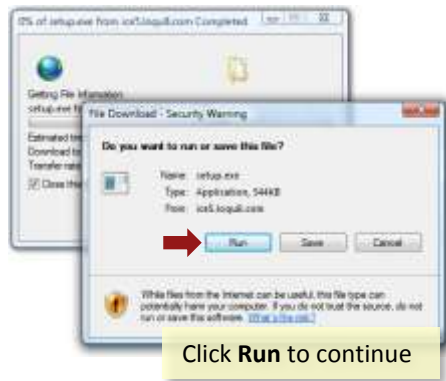
People learn in many different ways. Some like to understand the rules of grammar and etymology before attempting to read or speak; there are many textbooks that are well-suited for them. On the other hand, iCE is for people who **learn by doing**—even if they weren't planning to learn. If that's you, then iCE may be just the tool you need.

LiveScan revolutionizes the way people interact with foreign websites. Instead of trying to translate the whole page into English (a hopeless, yet comical effort, with today's technologies), iCE assumes nothing and shows possible definitions for each word or phrase in a pop-up window. You choose the best translation for the context.

Some people can learn Chinese simply by memorizing a dictionary or a list of 10,000 popular words. You can use iCE to **learn by exploring** Chinese websites and instantly viewing English translations. Search for similar words in the electronic dictionary or search the web for contemporary examples of those words used in real-world news story or blog. When you're interested about the words you're learning from today's websites, you'll be more excited about learning Chinese.

Glide your mouse over a picture caption or headline to see the English definitions, hear the pronunciation and link to websites. Suddenly a powerful connection is made. That's when learning really starts to take place.



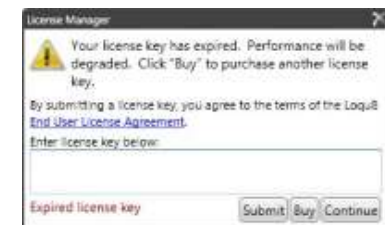


To install Loqu8 iCE:

1. Download iCE from <http://www.loqu8.com/products/download.htm>
2. Click **Run** to download and install Loqu8 iCE program. Windows Vista may ask you verification questions:
 - ✓ Do you want to run or save the file? Click **Run** button
 - ✓ Do you want to run this software? Click **Run** button
 - ✓ Do you wish to install these components (Simplified Chinese TTS)? Click **Install** button
3. Enter your license key from your email sent from sales@loqu8.com. If you did not receive the email, enter your email address and a new email will be sent to you.
4. After loading and building the database, iCE will install a small icon in your system tray (bottom right corner of your screen).
5. The iCE icon will be installed in your system tray (bottom right corner of your screen).

Trial License

The iCE software is initially activated for a trial period of 15 days with complete functionality and full performance. After the trial period, your performance will be degraded. At any time, you can restore full functionality by purchasing a license from Loqu8 at www.loqu8.com/buy



System Requirements

Loqu8 iCE is optimized for personal computers with Microsoft Windows Vista, Windows XP SP2 or Windows Server 2008. Apple Macintosh systems will also require a virtualization environment.

Minimum

- Chinese fonts (to see and print Chinese characters)
- Simplified Chinese TTS (to hear Chinese pronunciation)
- Microsoft .NET 3.0 framework (included with Windows Vista and XP SP2)

Recommended

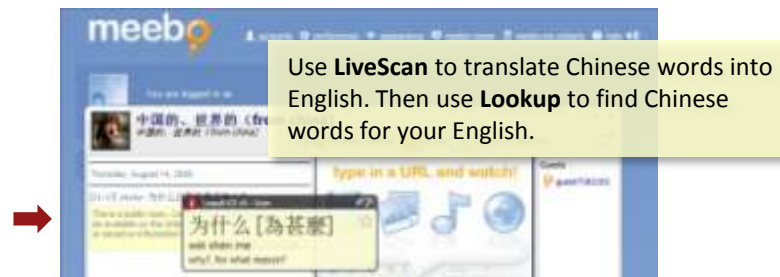
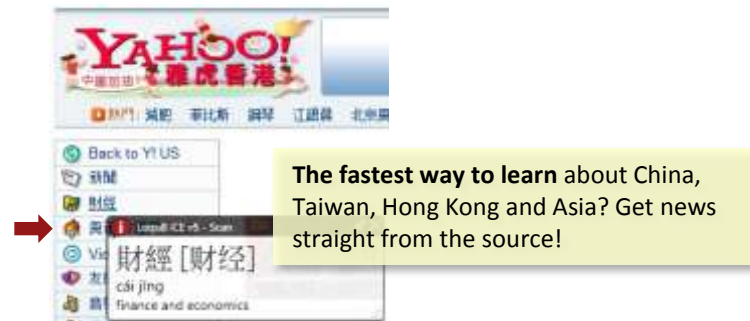
Personal computer with Microsoft Windows Vista; Vista Ultimate's Microsoft Lili voice is supported. Internet Explorer 8 or Firefox 3 browser. Microsoft Office (Outlook, Word, Excel, PowerPoint). Sound card and speakers or headphones required to hear pronunciation.

Virtualization Environments for Mac OS/Linux

- *Parallels Desktop*
<http://www.parallels.com/en/download/desktop/>
- *VMware Fusion*
<https://www.vmware.com/tryvmware/login.php?eval=fusion>
- *VirtualBox*
<http://www.virtualbox.org/>

Not Supported

Microsoft Windows Me/98/95



Purchasing a License Key



1. To purchase a key, right-click on the iCE icon in the system tray. If iCE is not currently running, visit www.loqu8.com/buy to purchase a license (immediate electronic delivery) or CD (Priority Mail for US or First Class International Mail for Canada)
2. Select **Help**, then **Purchase License**. A new browser window will open up to PayPal for processing your payment. You do not need a PayPal account to purchase iCE

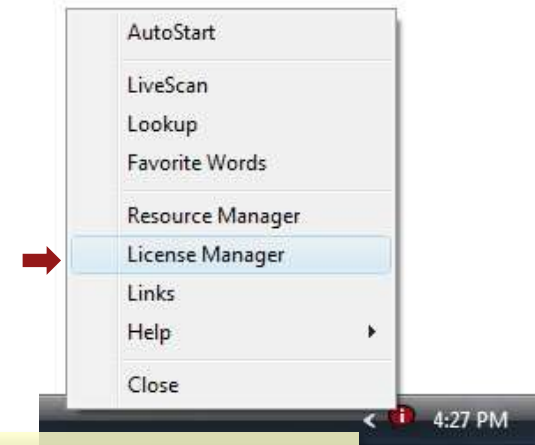
Note: If you qualified for any discounts (e.g., academic price), then you **must** open the PayPal screen from iCE's **Help > Buy License** link to see your special price near the top right side of the PayPal screen. This price is valid only for electronic delivery

3. Complete the information on the screen.
4. Loqu8 will send a License Key to your email address. This license is valid only for one user (per End-User License Agreement, see Appendix H).

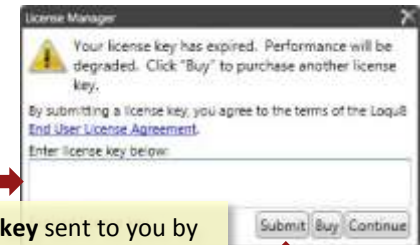
Entering License Key

If you have purchased a license key, enter it into iCE:

1. Right-click on the iCE icon in the system tray
2. Select **License Manager**
3. In the License Manager, enter your license key and press the **Enter** key. iCE will validate your key with the Loqu8 server. In about a minute, you may resume using iCE. Click Skip to continue



Open the **System Menu** by right-clicking the iCE icon



Copy and paste the **license key** sent to you by Loqu8. To request a trial license key, enter your email address and click **Submit** and **Skip**



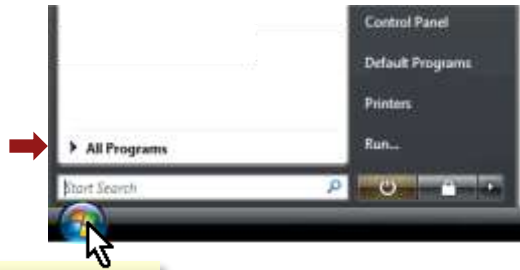
After installing iCE, start the program by clicking on the Windows **Start** button and choose **All Programs**. In the **Loqu8** folder, select **iCE Chinese-English v5.1**

Auto-Startup

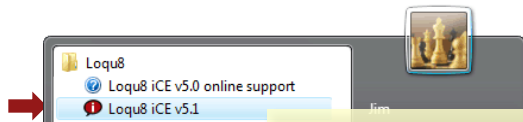
Normally after starting Windows, iCE Loqu8 will startup automatically. As a well-behaved application, iCE installs its program icon into your Windows Startup folder.

Manual Startup

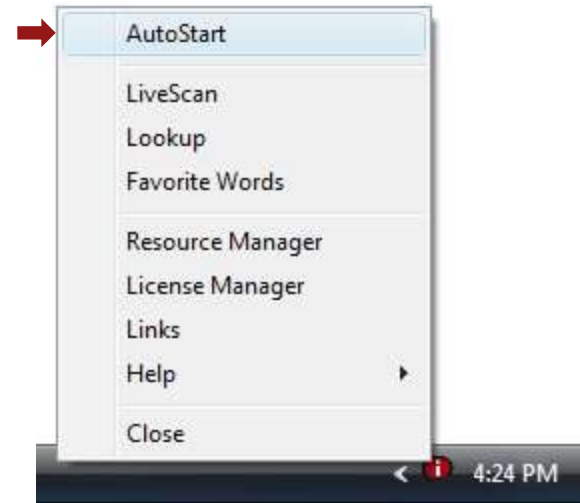
Click on the Windows **Start** button and choose **All Programs**. In the **Loqu8** folder, select **iCE Chinese-English v5.1**



First, click on the Windows **Start** icon and choose **All Programs**



Then open **Loqu8** and then click **Loqu8 iCE v5.1**



Disabling AutoStart

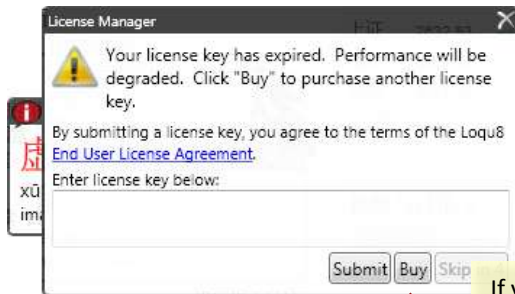
Normally, iCE will run every time your start Windows. To disable AutoStart, right-click on the iCE icon in the system tray. Un-check the AutoStart option. To permanently uninstall iCE, see Appendix E.

Auto Update

If your computer is connected to the Internet when iCE starts, the program automatically checks for minor updates. If an update is available, you will be asked to download the software. Click **OK** to download and install the update. Once iCE is running you will see a small red iCE icon in the system tray, near the bottom right corner of your screen.

Expired License

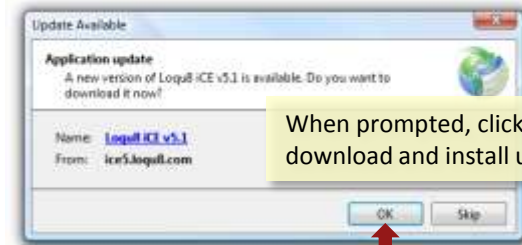
If your license has expired, you will see a reminder to purchase the software license. Click **Buy** to open a link to the Loqu8 store. If you have purchased a license key, enter its value and click on **Submit**. Continuing without a valid license will allow the software to continue running, but with degraded performance.



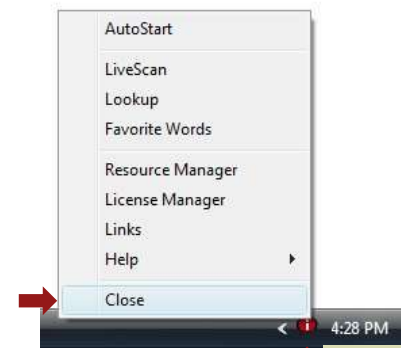
If your trial license has expired, click **Buy** to purchase a license

Exiting iCE

To exit the program, **right-click** the iCE icon and choose **Close** from the system menu. To uninstall iCE, see Appendix F.

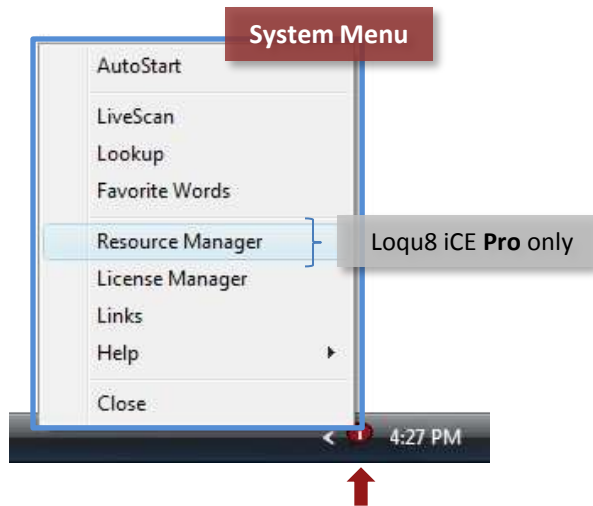


When prompted, click **OK** to download and install updates



To close iCE, **right-click** on the iCE icon in the system tray

iCE Version 5 features an updated interface to speed access to common functions. The **System Menu** controls access to the two key functions (Scan, Lookup), opens links, displays help and closes the iCE program.



- **Resource Manager** (Professional Edition only) organizes, imports and exports your custom definitions. See Chapter 10 for more information
- Open **License Manager** to enter your license key
- **Links** shows online resources for learning Chinese
- **Help** displays more information about using, purchasing and updating the program
- **Close** terminates iCE. To temporarily suspend iCE, left-click the iCE icon in the system tray. The icon will change from red to gray. Note: if the icon is not visible, click on < to view all system tray notifications

Locate the **iCE icon** in your system tray, usually near the bottom right corner of your screen

- **Right-click** the iCE icon to open the System Menu
- **Left-click** the iCE icon to turn LiveScan (translation) mode on or off. The iCE icon will change to red when LiveScan is on



- **AutoStart**, when checked, starts iCE with Windows. Uncheck this option to manually run iCE
- **LiveScan** window shows instant Chinese to English translations. iCE continuously scans for Chinese characters near your mouse cursor whenever the red iCE icon is displayed. To pause this LiveScan process, **left-click** the red iCE icon in the system tray. When the iCE icon has turned to gray, then LiveScan is paused. To resume Live Scan, click the gray iCE icon or select Scan from this menu
- **Lookup** window allows you to search the Chinese/Pinyin-English dictionary for words, phrases and names
- **Favorite Words** window lists the words that you've tagged with a star

Red icon: LiveScan is on.
Gray icon: LiveScan is off



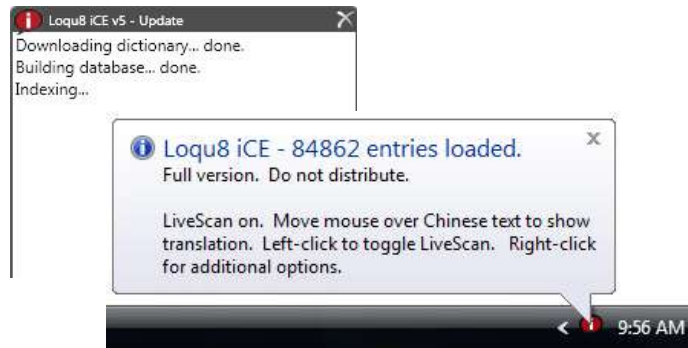
The Help sub-menu is divided into 4 sections

Documentation and Support

- **User Manual** – view or download this document
- **Support Forum** – open web browser to a community of users moderated by Loqu8

Dictionary

- **Check for Dictionary Updates** – downloads and updates the standard Chinese-English dictionary . Dictionary updates are available every few weeks

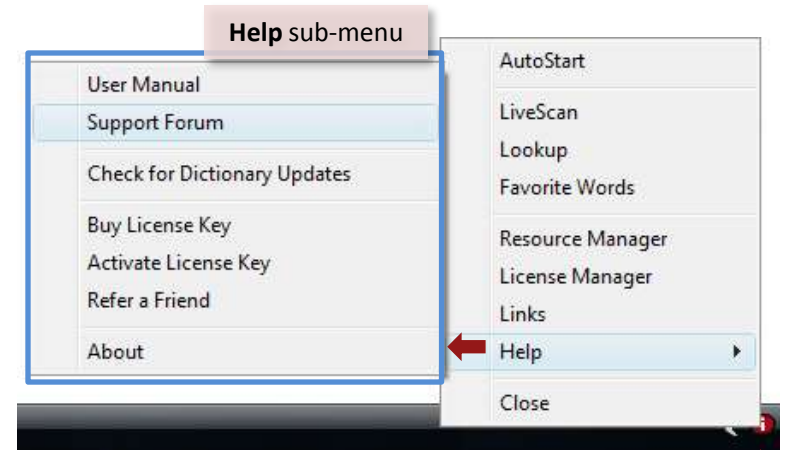


License Manager and Referrals

- **Buy License Key** – open web browser to Loqu8 Store
- **Activate License Key** – open License Manager. Enter the license key you received in an email from Loqu8. If you didn't receive the email, enter your email address into this dialog box and a new key will be sent to you
- **Refer a Friend** – tell others about Loqu8 iCE

About Loqu8 iCE

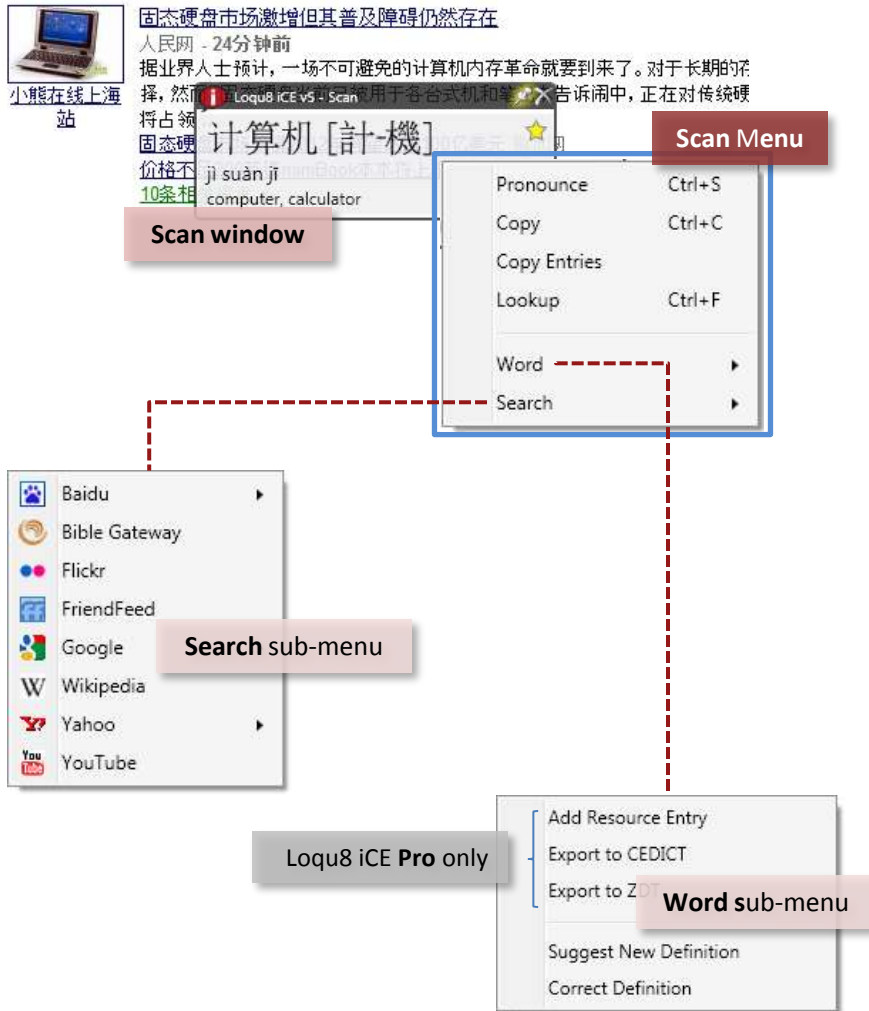
- **About** – display version number and copyright information about this program



Open the **Help sub-menu** by:

- Right-click iCE icon in the system tray
- Choose Help





The Scan window showcases the most popular feature of iCE: instant Chinese-English translations.

Scan Menu

Right-click *inside* the Scan window to view these selections:

Main Functions

- **Pronounce** – speaks the selected Chinese characters in Mandarin
- **Copy/Copy entries** – copies selection to Windows clipboard. See Chapter 8 for details on these functions
- **Lookup** – opens the Lookup window to search the Chinese-English dictionary

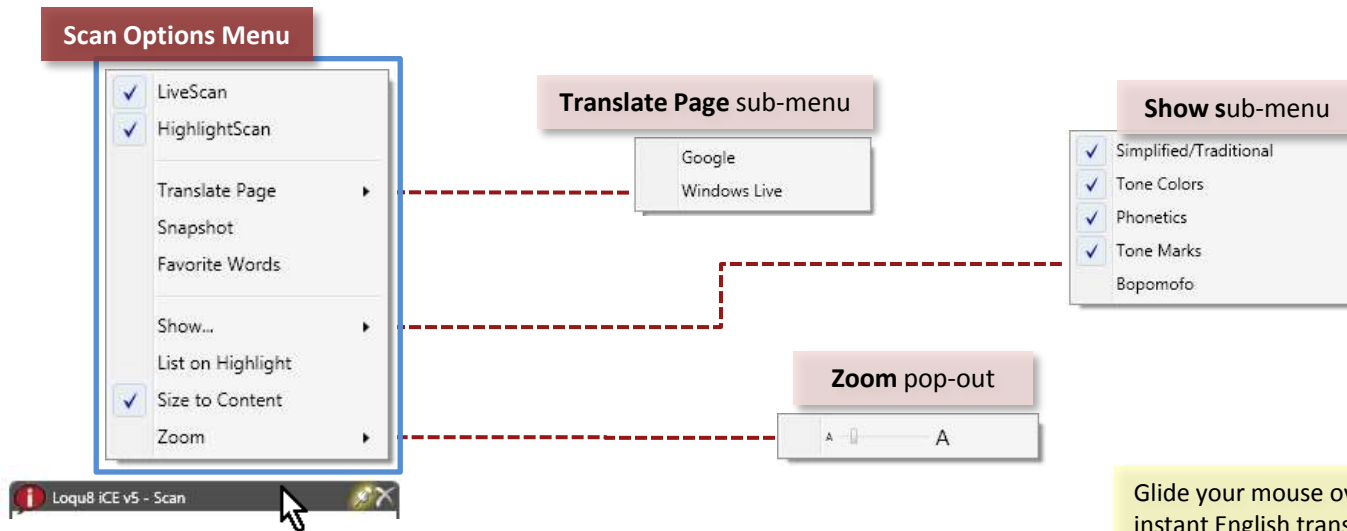
Word Sub-Menu

- **Add Resource Entry** – opens the dialog box to add the selected entry to the iCE dictionary; iCE Professional only
- **Export to CEDICT** – save current entry into a text file compatible with iCE/CEDICT ; iCE Professional only
- **Export to ZDT** – save current entry into a text file compatible with ZDT flashcards ; iCE Professional only
- **Suggest New Word** – open webpage to suggest a new entry in the CEDICT dictionary
- **Correct Word** – open webpage to suggest a modification to an existing word in the CEDICT dictionary



Search Sub-Menu

- Baidu, Bible Gateway, Flickr, et al. searches the web using the selected Chinese characters



Right-click *the black title bar* of the Scan window to view these options:

- **LiveScan** – toggles instant translations on/off
- **HighlightScan** – open scan window when highlighting Chinese text
- **Translate Page** – links to Google or Microsoft for web page translations
- **Snapshot** – saves the Scan window into a PNG graphics file
- **Favorite Words** – opens the window listing the words that you’ve tagged with a star
- **Show** – opens sub-menu with options for displaying simplified/traditional characters, tone colors, phonetics, tone marks and Pinyin/Bopomofo
- **List on Highlight** – display highlighted characters as a list
- **Size to Content** – automatically re-size window based on length of the content
- **Zoom** – enlarge/reduce fonts

Glide your mouse over Chinese text to see instant English translations.

- Left-click and drag to **highlight** words
- Right-click inside the window to see **Scan Menu**
- Right-click the black title bar to open the **Scan Options Menu**



Click the star to tag this word as a **favorite**

Lookup Window and Menus

iCE Lookup is a powerful electronic dictionary. You can search for terms in Chinese, Pinyin or English. The Lookup window will display all matches in the keyword or definition.

Lookup Menu

Right-click *inside* the Lookup window to view these selections:

- **Pronounce** – speaks the selected Chinese characters in Mandarin
- **Copy/Copy entries** – copies selection to Windows clipboard
- **Lookup** – search for the selected Chinese term in Lookup
- **Word** – add/edit entry (iCE Professional only) and suggest/edit definitions
- **Search** – use selected Chinese words to search Baidu, Bible Gateway, Flickr, et al.)

Lookup Options Menu



Right-click *the black title bar* of the Lookup window to view these options:

- **Favorite Words** – looks up the words that have been tagged with a star as a favorite word
- **Clear Favorite Words** – clears the list of words that have been tagged with a star
- **Show** – opens sub-menu with options for displaying simplified/traditional characters, tone colors, phonetics, tone marks and Pinyin/Bopomofo
- **Zoom** – enlarge/reduce fonts



From the *Scan Menu* or *System Menu*, choose

Lookup:

- Right-click inside the window to see **Lookup Menu**
- Right-click the black title bar to open the **Lookup Options Menu**



The window controls for Loqu8 iCE have been significantly upgraded in Version 5. In response to countless feedback from users, iCE gives you the flexibility to personalize the windows to fit the way you use it.

In earlier versions of iCE, the LiveScan window followed the mouse cursor to provide instant Chinese-English translations. This new version lets you “pin down” the window so it’s less distracting for some users.

The resizable windows lets you place them in a corner of your desktop and then enlarge them at your command—ideal for users with multiple displays or high-resolution monitors.

Classroom instructors (and those who have had difficulty discerning the intricacies of Chinese characters) will certainly appreciate the ability to enlarge the fonts to a very large size.



Right-click title bar to see window options, including auto-size (size to content) and zoom font size

Click the push-pin to **freeze** this window

Click the **X** to **close** this window ; iCE will continue to run in the background



Drag the corner of the window to **re-size** larger or smaller

Let's take a quick tour of iCE's exciting new features.

1. Open the System menu with a right-click on the iCE icon in the Windows system tray (bottom right corner of your screen).
2. Choose **Links** and then select **Google News – China**. Your default web browser will open to this website.

Traditional or Simplified?

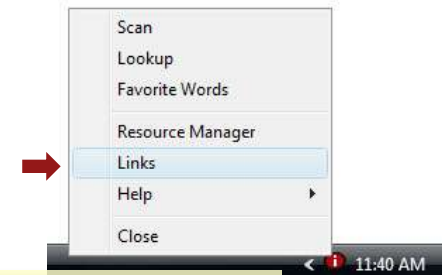
Written Chinese has evolved over the past 3500 years. In recent years, written Chinese has been standardized using the Traditional form. Today only Taiwan, Hong Kong and Macau officially use Traditional forms. In the 1950s and 1960s, China (People's Republic of China, PRC) began using Simplified forms.

iCE works with both Traditional and Simplified Chinese characters. The Links menu, shown to the right, shows various websites rendered in both Simplified and Traditional characters.

For More Information

Evolution of Chinese writing: <http://www.ancientscripts.com/chinese.html>

	oracle bone jiaguwen	greater seal dazhuan	lesser seal xiaozhuan	clerkly script lishu	standard script kaishu	running script xingshu	cursive script caoshu	modern simplified
rén (*nin) human	𠤎	𠤎	𠤎	人	人	人	人	人
nǚ (*nraʔ) woman	𠤎	𠤎	𠤎	女	女	女	女	女
ěr (*nhaʔ) ear	𠤎	𠤎	𠤎	耳	耳	耳	耳	耳
mǎ (*mrakʔ) horse	𠤎	𠤎	𠤎	馬	馬	馬	馬	马
yú (*ŋa) fish	𠤎	𠤎	𠤎	魚	魚	魚	魚	鱼
shān (*ʃran) mountain	𠤎	𠤎	𠤎	山	山	山	山	山



Open the **System Menu** with a right click on the iCE icon in the system tray

On the **Google News – China** page, you should see something similar to the image shown to the right. Chinese characters should appear throughout the page (other than the Google logo, Gmail, etc.).

Seeing Squares?



If you're seeing a lot of small squares on the page, then you'll need to load Chinese fonts and turn on East Asian language support (Windows XP only).

Loqu8 recommends the **AR PL New Sung** font. It's optimized for use in displays, contains both Traditional and Simplified Chinese characters and it's free at Loqu8's website.

For More Information

Download **AR PL New Sung** font: <http://www.loqu8.com/products/download-newsung.htm> and see Appendix B and C for font installation instructions.



The Google News page changes many times throughout the day. Your page **will look different** than this sample screen

As you glide your mouse over the Chinese characters, the iCE Scan window shows:

- Enlarged view of the Chinese character(s) in both Simplified and Traditional forms. If the web page uses Simplified characters, then Traditional forms (if any) are shown in brackets to the right **[A]**
- Phonetic pronunciation (default is Pinyin)
- Definition or description in English

Pop-up Definitions

Just as some English words have multiple meanings (*red* could mean a color or a financial loss), some Chinese characters also have multiple meanings and pronunciations. iCE groups meanings by pronunciations in the pop-up window **[B]**.

Move your mouse pointer into the window and right-click to open the Scan menu to show actions for the current entry :

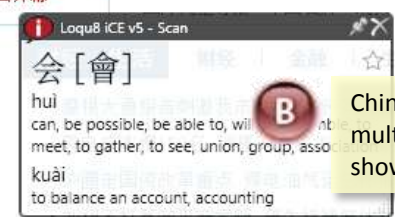
- To hear the word pronounced, choose **Pronounce**. Alternatively, you can use the shortcut keystroke Ctrl-S.
- If there are multiple meanings for a word, iCE lets you select and highlight each one by clicking with your mouse. To copy the selected entry (or entries), from the right menu choose **Copy** or **Copy Entries**. You may paste this into an email or word processor document.
- To search the dictionary **[C]** for matching words or definitions, choose **Lookup** or the shortcut, Ctrl-F.

Tip: All the functions of the Scan menu (pronounce, copy, lookup, word, search) are also available in the Lookup window. Word sub-menu is available only in iCE Professional.

Open the **Scan Menu** by moving your mouse pointer into the pop-up window. Right-click to see a list of actions for the entry



Chinese characters with multiple meanings are all shown in the window



Use **Lookup** to search the dictionary using the selected Chinese character(s) or enter your own English words



Web Searches

The Scan menu [A] also allows you to conduct web searches at popular websites—without copying+pasting or typing Chinese. A new browser window will open to the specified site [B].

- **Baidu:** gateway to Chinese news, web, forum, answers, MP3, images and video
- **Bible Gateway:** find text in Old and New Testament, Chinese Union Version (Simplified and Traditional) of the Bible
- **Flickr:** find images on this Yahoo! photo sharing site
- **FriendFeed:** share a stream of information with your friends
- **Google:** search web, images, news, books, scholar (academic resources) and blogs
- **Wikipedia:** find articles on specified topic
- **YouTube:** locate videos with selected keyword(s)

This concludes the Quick Tour. The following chapters detail the core functions of iCE: translation, pronounce, lookup, copy and web search/link.



Search Wikipedia in Chinese—
without typing any Chinese

Instant, Pop-up Translation

Live Scan, the high-speed process of translating Chinese into English, is the main function of Loqu8 iCE. Version 5 of this program incorporates a powerful new scanning engine that works with a wider range of applications, including Microsoft Window (files, folders), Office (Outlook, Word, Excel, PowerPoint) and Mozilla Firefox.

With LiveScan, iCE has made Chinese-English translation faster and easier. Instead of copying text and pasting it into complicated dialog boxes or requiring users to press cumbersome keystrokes (e.g., Ctrl-Right Mouse button), iCE 's powerful LiveScan immediately translates words at the mouse pointer.

The iCE Scan window [A] may be customized to show:

- Enlarged view of the Chinese character(s) in both Simplified and Traditional forms. If the web page uses Simplified characters, then Traditional forms (if any) are shown in brackets to the right
- Phonetic pronunciation (choice of Pinyin or Bopomofo)
- Definition or description

With over 84,000 Chinese/Pinyin and English entries in the dictionary, iCE is ready to handle today's greatest challenge: translating news websites into English. Multi-character names of people (e.g., *Barack Obama*), companies (Sony, Microsoft) [B] and phrases (*operating system*) [C] have always been a challenge, but not for iCE. Unlike traditional dictionaries that are revised annually or less frequently, iCE is updated throughout the year for the most up-to-date names, words and definitions.



The 84,000+ word iCE Chinese-English dictionary is constantly updated. Many well-known, non-Chinese people, companies, products and organizations are in the dictionary



The names of many companies and consumer brands are also translated from Chinese to English



而操作系统则使用了Windows Mobile 6 Professional, 运行速度较之前辈

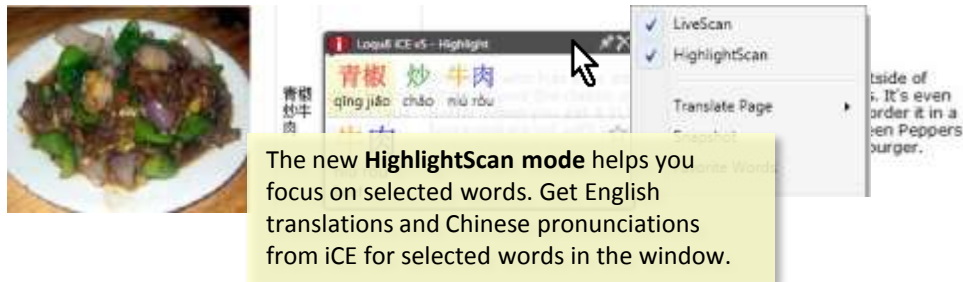


Multi-character Chinese words, names and phrases are parsed into easy-to-understand English

The iCE Scan window is an **interactive** translator. Instead of guessing at the meaning of a word based on frequency or assumed context, iCE shows the most common definitions for the word or phrase.

Within the Scan window, definitions are grouped by pronunciation. To guide users learning Chinese, each definition is also shown with the phonetic (Pinyin or Bopomofo). When multiple definitions are shown, use your mouse to highlight and select the entries that are interesting to you. With your mouse, right-click to open the Scan menu. These options will be explained in the next chapter.

New HighlightScan Mode



The new **HighlightScan mode** helps you focus on selected words. Get English translations and Chinese pronunciations from iCE for selected words in the window.

When learning Chinese, it's best see the more than just a few words at a time. With your mouse, highlight a range of Chinese characters. In the top portion of the window, you'll see an enlarged view of the Chinese with Pinyin (default) phonetics. This contextual view helps you to focus on each word or phrase at a time. To turn on this feature, right-click the black Scan title bar to open the Scan Options menu. Check Highlight Scan.

Tip: To hear the words spoken in Mandarin, highlight the Chinese (or Ctrl-A to select all in the window) and then press **Ctrl-S**. To interrupt iCE speaking, press the Esc key.

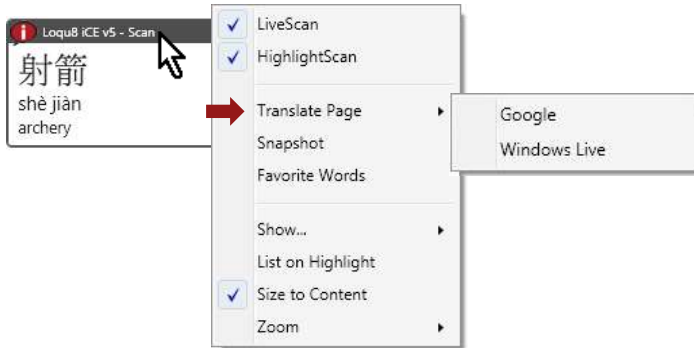


Fast interactive translations makes it easier for you to scan emails, documents and presentations for key words



Navigating a website? Let iCE translate web links before you click

iCE now adds the capability to translate an entire web page. From the Scan window, right click the top title bar and choose **Translate Page**. Choose from Google or Microsoft Windows Live online services.



Whole page translation software have been around for decades, but most users find them too inaccurate for most uses. Try it for yourself and see if it's helpful for your application.

Tip: When the whole page translation software cannot produce a meaningful translation, it will frequently leave bits of Chinese within the translation. Use iCE to instantly translate those words or phrases.

Close Scan Window

At the top right corner, click the **x** to **close** this window . iCE will continue to run in the background.

Instant Translation vs. Whole Page Translation

Traditional programs that translate an entire page (or webpage) at-a-time are ideal for users who just want translations of a long document. This process can take **several minutes per page**. Since these programs have a limited understanding of the context, translations can be nonsensical and humorous.

For most applications, iCE recommends the LiveScan window which translates words **interactively**. The user is presented with multiple possible translations and he can choose the appropriate translation for the context. This is especially helpful for navigating websites (finding the right tab or closing an advertisement window). Learning Chinese? iCE gives you translations only when you need it.



iCE provides quick links to online **web page** translation services

iCE is a very powerful **text** translator, but it does not understand graphics, videos or animation. Text embedded inside logos, advertisements and Flash animations will not be translated. If you can't select the individual Chinese characters, then iCE can't translate it. Websites with complex formatting, may not be currently supported.

Supported Website Links

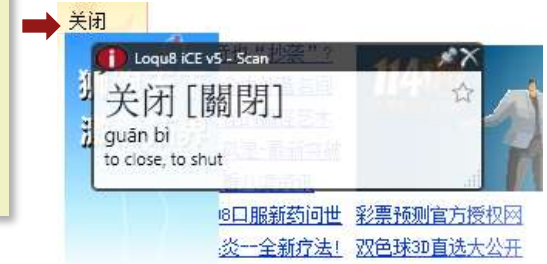
iCE will handle many different websites, but Loqu8 supports and links to these popular sites:

- Baidu News
- BBC - *simplified and traditional Chinese*
- Google News - *China, Taiwan and Hong Kong*
- Reuters - *China*
- Yahoo - *China, Taiwan and Hong Kong*
- Bible Gateway - *simplified and traditional Chinese*

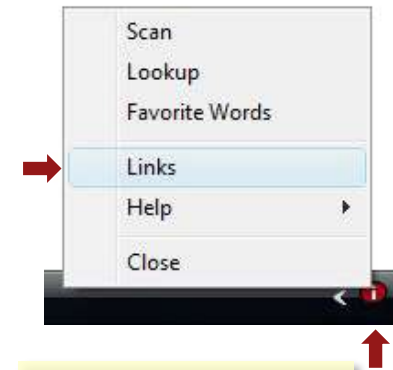
iCE also links to these Chinese historical and cultural resources , including Chinese Text Sampler, *The Art of War* by Sun Tzu and *300 Tang Poems*.

Tip: To quickly access these and other Chinese sites, choose **Links** from the System menu (right-click the iCE icon).

Close a pop-up advertisement? Be sure the link you're clicking is the one you really want. Glide your mouse over the text for an instant translation



Logos and graphics with text **cannot** be translated



Right click on the iCE icon in the system tray

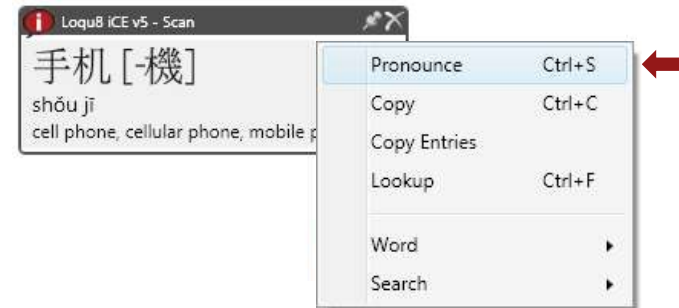
iCE pronounces Chinese characters in Mandarin Chinese. Just glide your mouse over a word or phrase. When the pop-up Scan window appears, click inside the window, then right-click and choose **Pronounce** (or Ctrl-S). You'll hear the voice carefully intonate the word or phrase.

iCE includes the Microsoft Chinese TTS voice (male). For Windows Vista Ultimate users, the higher quality Microsoft Lili (female) voice is also supported.

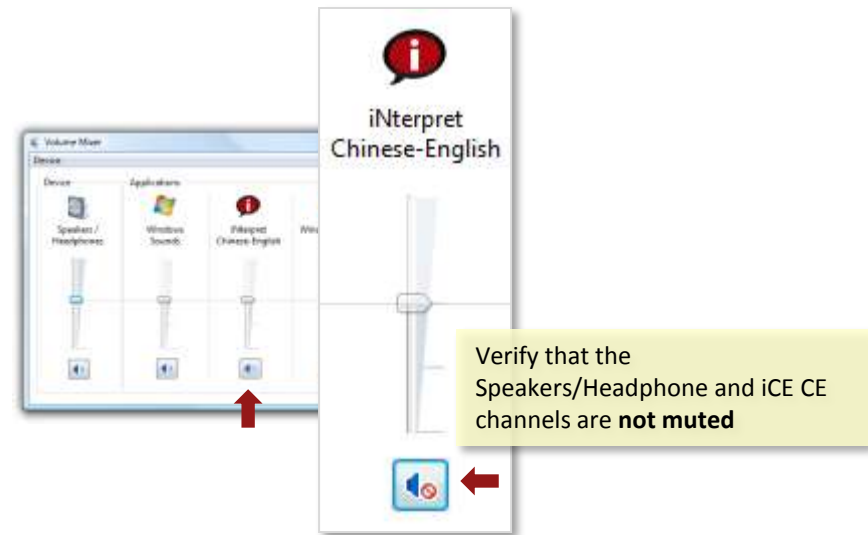
Tip: If you don't hear anything, be sure to set your computer's audio volume:

1. From the Vista* Control Panel, select **Hardware and Sound**
2. Choose **Adjust system volume**
3. On the **Volume Mixer**, look for **iNterpretCE** and slide the volume level up
4. Make sure the channel for iCE is **not** muted
5. Close the dialog boxes

* Also see *Appendix B: Windows Vista Tips*. For Windows XP users, see *Appendix C: Windows XP Tips*.



Esc **Tip:** To interrupt iCE pronouncing a long passage of text, press **Esc** button



Chinese may be spoken in many regional dialects or variants. Mandarin Chinese is official spoken language of China (People’s Republic of China), Taiwan (Republic of China) and one of four languages of Singapore. Worldwide, approximately 836 million people speak Mandarin Chinese. Standard Mandarin is based on the Mandarin spoken in Beijing, China. This dialect, used by iNterpret, is slightly different from the Mandarin spoken in Taiwan.

Standard Mandarin is characterized by **five tones**:

- First tone (flat): ā (ā) ē ī ō ū ǖ Ā Ē Ī Ō Ū ǚ
- Second tone (rising): á (á) é í ó ú ǘ Á É Í Ó Ú ǘ
- Third tone (falling-rising): ǎ (ǎ) ě ĭ ǒ ǔ ǚ ǎ ě ĭ ǒ ǔ ǚ
- Fourth tone (falling): à (à) è ì ò ù ǜ À È Ì Ò Ù ǜ

The **neutral** tone is shown without any accent mark: a (a) e i o u ü A E I O U Ü

Tip: Hearing these tones is the best way to learn how to recognize them and to speak Chinese. Use iCE’s Pronounce (Ctrl-S) function whenever a word appears in the Scan or Lookup windows.

Spoken Chinese

Linguists categorize spoken Chinese into 10 different variants. For many Chinese speakers, each major variant

- Mandarin (including Wu, Jin, Xiang, Hui)
- Cantonese (including Ping)
- Taiwanese (including Min)
- Hakka
- Gan

can be described as a dialect of Chinese. Many Chinese have difficulties comprehending different major variants. For example, Cantonese is not well-understood by Mandarin speakers. On the other hand, many Cantonese speakers have learned to understand and speak Mandarin (albeit with a Cantonese accent).



Spoken Chinese

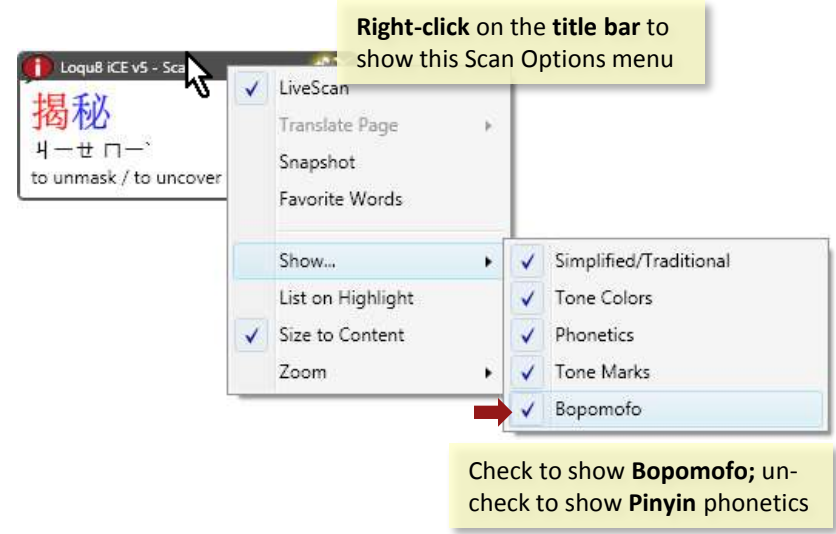


The Scan pop-up window may be configured to selective show more or less information. Right-click in the Scan window and select **Show...**

- **Simplified/Traditional** – check to show both Simplified and Traditional characters. Un-check to display only the characters in the text translated by iCE
- **Tone Colors** – make it even easier to see each of the 4 Standard Mandarin tones (plus neutral). Check to show Chinese characters in colors; un-check to show characters only in black.

妈 [媽]	蟆	馮	馮	么 [麼]
mā	má	mǎ	mà	ma
ma / mamma	toad	name of a river	to curse, to revile, to abuse / to scold	interrogative final particle

- **Phonetics** – check to display phonetics (Pinyin or Bopomofo); un-check to hide this pronunciation help
- **Tone Marks** – When Phonetics is enabled, shows marks on the Pinyin phonetics; un-check will show tone numbers
- **Bopomofo** – Check to show phonetics with Bopomofo; un-check to show Pinyin



iCE uses two different phonetics to guide pronunciation. Pinyin (Hanyu Pinyin) uses the Latin alphabet (similar to English) to represent sounds. Some letters (j, q, x, zh) do not correspond to any English sounds. Pronouncing pinyin according to standard English rules will frequently be incorrect. Listening to the Chinese pronounced while observing the pinyin can be very effective.

iCE uses Pinyin as the default phonetics. Pinyin is very common in China. In Taiwan, Bopomofo (Jhuyin fuhao) is more commonly used. This system uses 37 letters, 21 consonants and 16 vowels, to transcribe Mandarin sounds. Instead of using Latin characters, Bopomofo uses variations of ancient Chinese characters, simplifications or nearly identical radicals.

Note: The Pronunciation (shortcut key, Ctrl-S) is identical for both Pinyin/Bopomofo and Simplified/Traditional characters. Remember to click inside the pop-up window before pressing Ctrl-S.

Dictionary Lookup

The 84,000 entry Chinese/Pinyin-English dictionary is continuously updated with contemporary words, names and phrases. The Lookup window may be opened from either:

- System menu: right-click the iCE icon from the system tray
- Scan menu: right-click the pop-up window

Open the Lookup window from the System Menu or Scan Menu

Lookup Chinese words from the pop-up window—**without** typing any Chinese. Lookup also supports Pinyin and English

Tip: To hear all the Chinese words pronounced in the list, double-click the **up** or **down** scroll arrows. To interrupt iCE speaking, press the **Esc** button

Enter the *term* you want to find and press the Enter key. Lookup searches the entire dictionary, both **words and definitions**, using your term. With Lookup's multilingual capabilities, you can search for any combination of:

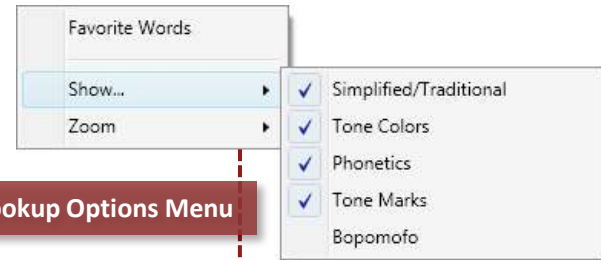
- Chinese - traditional or Simplified characters,
- Phonetics - Pinyin (with or without tone numbers), and/or
- English - with wildcards; see *Advanced Lookup with Wildcards* section in this chapter for details

Menus

- Right-click an entry to open the **Lookup** menu. All the functions in this menu are also in the Scan menu.
- Right-click the black title bar to open the **Lookup Options** menu

Close Lookup Window

At the top right corner, click the **X** to **close** this window. ICE will continue to run in the background.



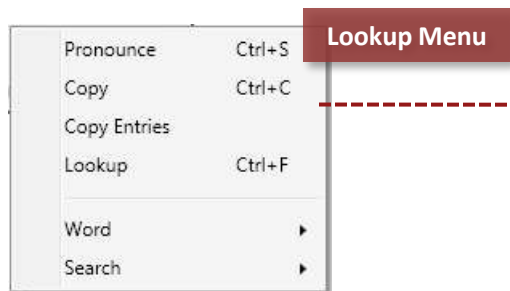
Lookup Options Menu



Click the down arrow to show a history of past searches in the session. Press **spacebar** or **backspace** to edit previous entries

Click the star to tag this word as a **favorite**

Drag the corner of this window to **re-size** larger or smaller





Lookup **beef** or 牛肉 and see all the dishes you can order from a Chinese restaurant. Before you order your next meal at a Chinese restaurant, lookup your favorite dish. Listen to how it's pronounced in Chinese (Ctrl-S). Practice it, memorize it and you're ready to order.

Tip: Want to surprise your Chinese waiter? Order your dish in Mandarin Chinese. When he (or she) wonders what you said, just **write** the name of your dish in Chinese!

What's your Chinese name? If you don't have one, let iCE suggest one for you. Loqu8's comprehensive dictionary can match many common names, including politicians and celebrities, with a Chinese sound-alike name.

Tip: Select an entry with the name. Type Ctrl-S (or choose **Pronounce** from the Lookup menu). Hear you name as someone in China might say your name.



Enter your name in English and let iCE search for individuals with that name in Chinese

Learning Chinese in a Modern Context

Traditional language classes frequently use vocabulary lists. Students often wonder, “when will I ever use this word?” Without a proper context, memorizing word lists quickly becomes a tedious chore.

iCE helps students learn and discover Chinese through immersion in popular websites. Use Lookup to find words with the word beef or 牛肉. Not surprisingly, you'll find many popular Chinese dishes with beef.

Visualization is a powerful stimulus. right click **Google > Images** and students start to recognize their favorite beef dishes and other images tagged with 牛肉.

For example, 哈尔滨[-爾濱] is Harbin, the capital of Heilongjiang province in northeast China. Want to know what's happening in Harbin? Click **Google > News** and see recent news stories.

As students interact with web-based content, their interest deepens and Chinese characters suddenly come to life—like never before. **That's the power of learning with Loqu8!**

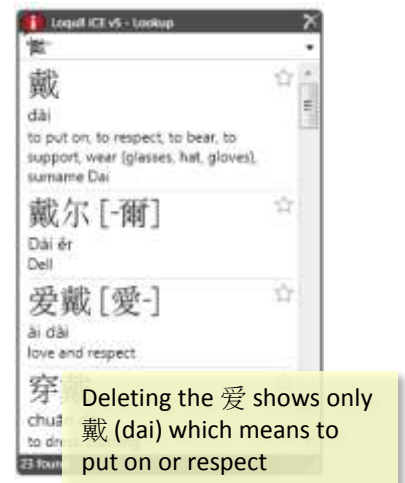
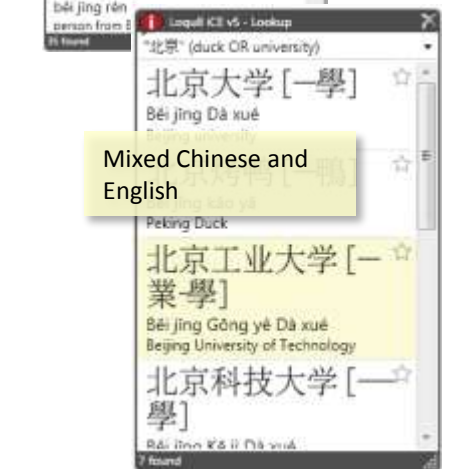
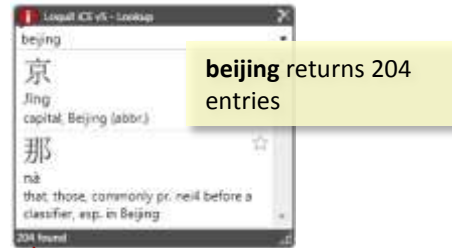
iCE Lookup supports a wide range of advanced search capabilities. Far more powerful than any printed or online Chinese-English dictionary, Lookup lets you tailor your search with wildcards so you'll find exactly what you want.

Overview

- Entering multiple words and characters implies an **AND** for all terms
- Use multiple words with **OR** to include all matches
- Use the *wildcard* (*) at the end of word fragments to match any words that start with that word fragment
- Use the *minus* (-) to exclude words

Examples

- beijing Finds all 204 entries for Beijing
- "北京" duck Adding duck narrows it down to just Peking Duck
- "北京" -capital Shows entries about Beijing, but not about capital
- "北京" (duck OR university) Only show entries about Beijing duck or Beijing University
- ai ma Returns 4 entries
- ai2 ma Adding the Pinyin tone number 2 to ai shows ái mà (to receive a scolding)



Mandarin uses four tones (plus neutral) to express vowels. **Lookup** is a handy way to hear and practice pronouncing the tones. You'll also see multiple entries that share those tones.

Open Lookup and observe the entries associated with each:

- ma Has about 832 entries (depending on dictionary version)
- ma1 Has 17 entries including mother and dragonfly
- ma2 Has 100 entries including leprosy and toad
- ma3 Has 666 entries including horse, morphine, mammoth and ant
- ma4 Has 26 entries including curse, mark and headboard
- ma5 With this neutral tone, has 26 entries including question tag

Tip: Turn on Tone Colors (Chapter 6) to quickly identify the tones.

Favorite Words

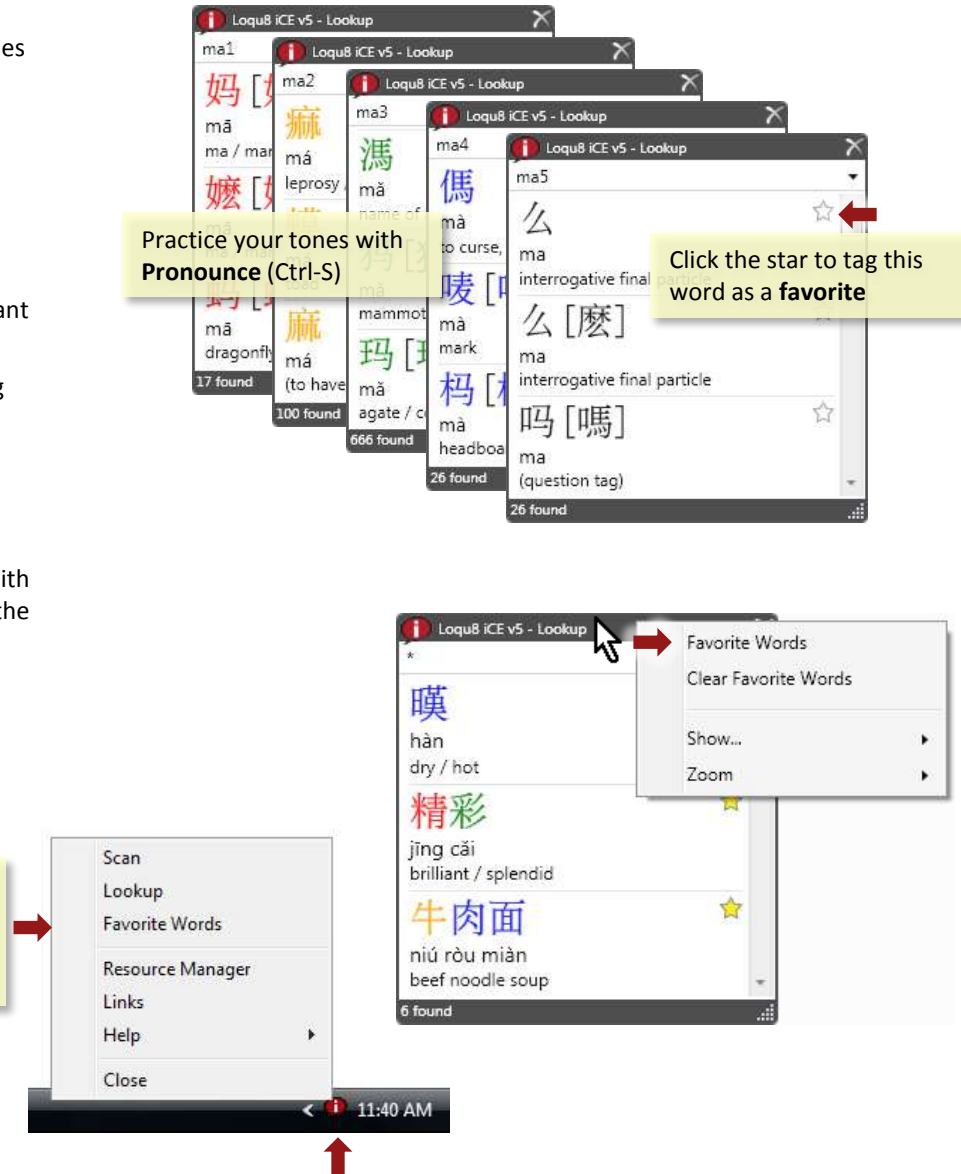
As you build your vocabulary, it's convenient to tag words for future recall. With iCE Version 5, just click the **star** to the right of each entry. Yellow star means the word is tagged as a favorite; white star means the word is not tagged.

To view the list of Favorite Words:

- Choose **Favorite Words** from the System menu, or
- Right-click the black Lookup title bar and choose Favorite Words

To un-tag a word as a favorite, click on the yellow star. To clear all the Favorite words, choose *Clear Favorite Words* From the Lookup Options menu.

From the iCE System menu, choose **Favorite Words** to open the list of words that have been tagged.



After iCE shows you a translation, you may copy and paste it into your email, document or other application.

Copy: copies only the Chinese character(s). For example: **[A]**

胡锦涛

Copy Entries: copies the highlighted entry (entries) including the Chinese, phonetics and English translation. For example **[B]**:

胡锦涛 [-錦濤]

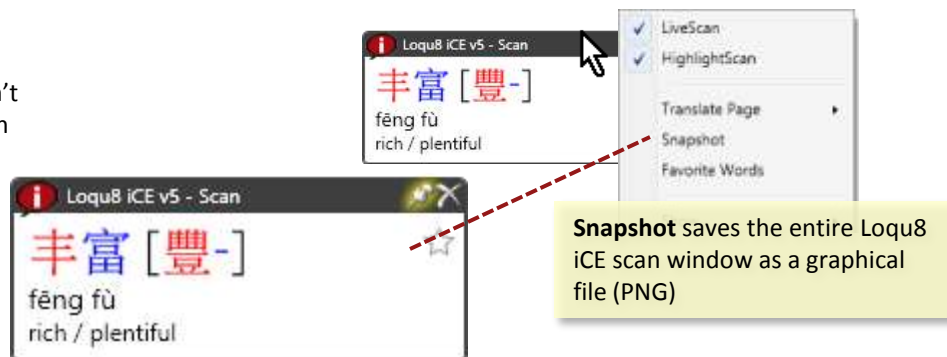
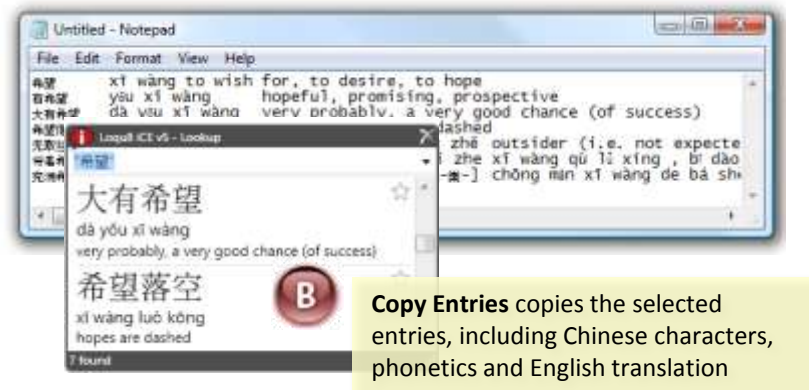
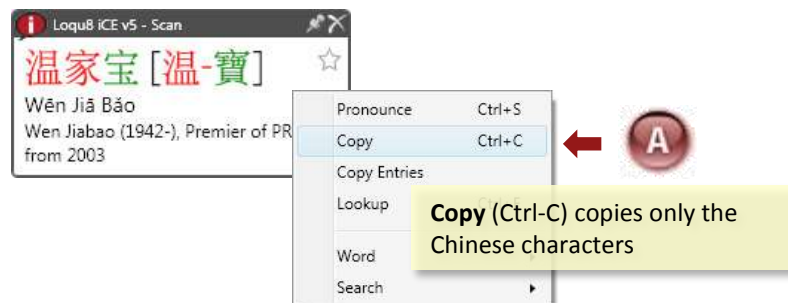
Hú Jǐn tāo

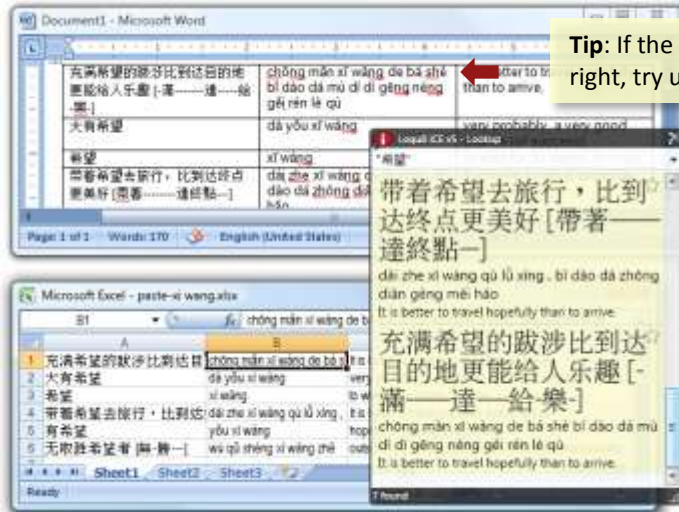
Hu Jintao (1942-), president of PRC from 2003

When multiple definitions for a word are shown, they are grouped by pronunciation. Click to select and highlight an entry. Hold the **Ctrl** key to select additional entries. Hold the **Shift** key to extend the selection range. When all the entries have been selected, choose **Copy Entries** to copy all the entries.

Tip: In your application (email, word processor), press Ctrl-V (or Edit > Paste) to insert the information copied from iCE. Not all applications support Chinese. Paste the information into Notepad. If Chinese appears in Notepad but not your application, then your application does not support Chinese.

Most modern applications (like Windows Notepad and Microsoft Office) support Chinese characters, including Bopomofo. If the Chinese characters don't appear correctly, try formatting them with *AR PL NewSung* font. For Pinyin with tone marks, use *Arial* font.





Tip: If the Pinyin with tone marks don't look right, try using a different font, like *Arial*

Chinese	Phonetics	English Definition
大有希望	dà yǒu xī wàng	very probably, a very good chance (of success)
希望	xī wàng	to wish for, to desire, to hope
有希望	yǒu xī wàng	hopeful, promising, prospective

ICE formats the entries you copy. Each row holds one entry. The Chinese characters appear first, then phonetics and finally the English definition. When pasting into a spreadsheet or table, the order is preserved:

- Column 1: Chinese characters
- Column 2: Phonetics (Pinyin or Bopomofo)
- Column 3: English definition.

Microsoft Excel

To paste a Chinese word or a range of entries, click on a cell in your spreadsheet and press Ctrl-V. The first column will hold the Chinese characters, the second holds the Pinyin (or Bopomofo) and the third column holds the English definition.

Microsoft Word

To paste just a Chinese word, press Ctrl-V. To paste a range of entries, insert a table with at least 3 columns and several rows. Highlight all the cells in the table and press Ctrl-V.

Microsoft Outlook

To paste just a Chinese word, press Ctrl-V. To paste a range of entries, insert a table with at least 3 columns and several rows. Highlight all the cells in the table and press Ctrl-V.

See an interesting word or name? Right-click on the iCE pop-up window and search 8 popular web services, like Google, Wikipedia, YouTube and more. One very powerful feature of iCE is the ability to directly search the web. Even if you haven't mastered the technique of entering Chinese, you can still search the web in Chinese—without typing Chinese.

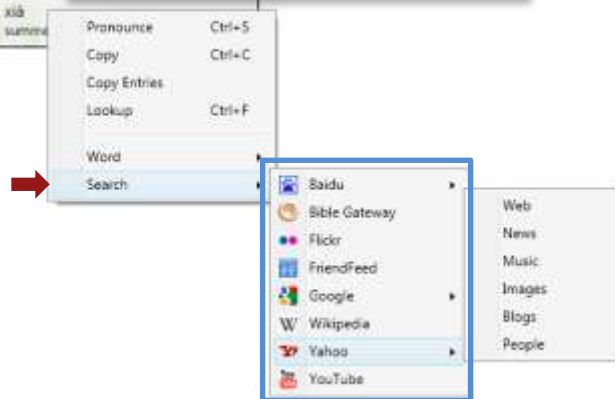


夏
夏娃 夏娃 夏娃 夏娃



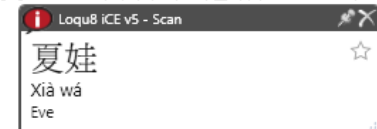
夏
Xià
the Xia or
of the Six
surname
xià
summer

Use Google, Yahoo, Baidu and other popular resources, to search the web for news, images, videos and more



創世記 3:20 (Chinese Union Version (Simplified))

20 亚当给他妻子起名叫夏娃，因为他是众生之母。



Search the Bible (Old and New Testaments). In this example, 夏 (xia) is also found in the book of Genesis, as the name Eve (夏娃), Xià wá.

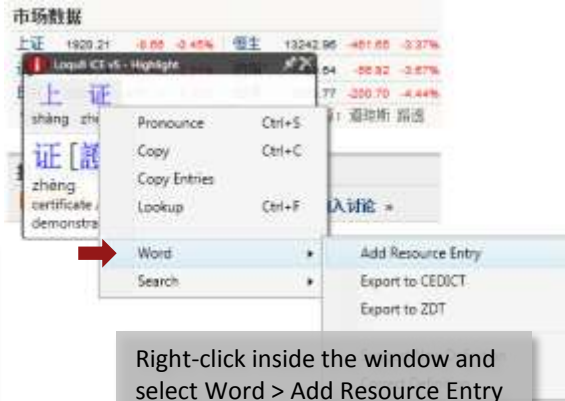
Over a dozen web search resources are integrated into iCE Version 5:



- **Baidu:** gateway to Chinese news, web, forum, answers, MP3, images and video
- **Bible Gateway:** find text in Old and New Testament, Chinese Union Version. iCE auto-senses the original text as Simplified or Traditional Chinese and searches the Bible appropriately
- **Flickr:** find images on this Yahoo! photo sharing site
- **FriendFeed:** share a stream of information with your friends
- **Google:** search web, images, news, books, scholar (academic resources) and blogs
- **Wikipedia:** find articles on specified topic
- **YouTube:** locate videos with selected keyword(s)



The Chinese version of the Wall Street Journal lists the 上证 exchange. iCE's literal translation isn't helpful, so let's add this abbreviation of the Shanghai Stock Exchange into your personal resource



Right-click inside the window and select Word > Add Resource Entry



iCE will suggest information based upon the word(s) you've selected. Edit the text and click Done to save your changes

The simplest way to add or edit an entry is to:

1. Start **Loqu8 iCE Professional** and verify that LiveScan is on. The red iCE icon should be visible in your system tray. If not, click on the gray iCE icon to toggle LiveScan on
2. Open your website or document. Glide your mouse over the target Chinese characters.
3. *Single Word*: Right-click inside the Scan window
Multiple Words: highlight all the characters. Click and select all the Chinese characters (Ctrl-A) in the top of the highlight window. Right-click inside the Highlight window
4. From the **Word** menu, select **Add Resource Entry**. Complete dialog box and click Done

Glide your mouse over the Chinese text and see the new definition. To edit the entry:

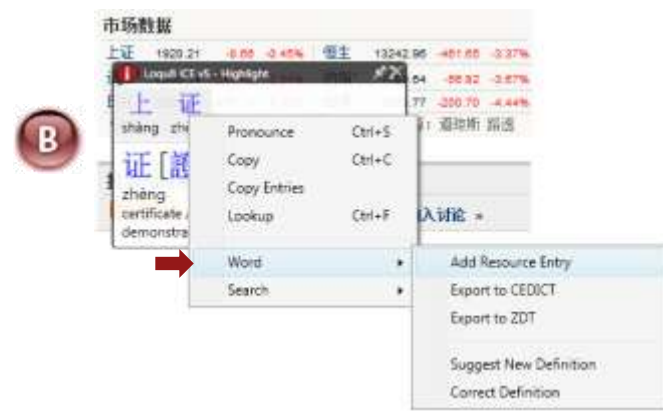
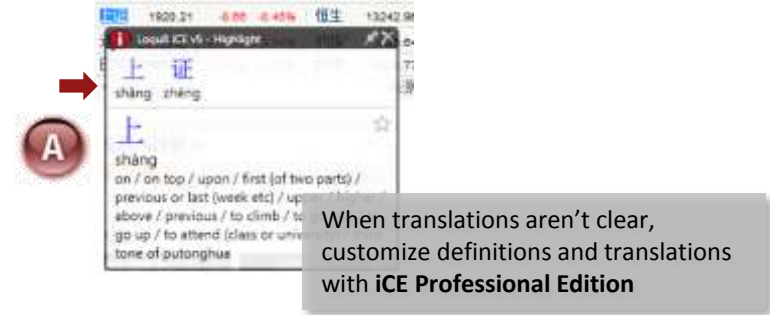
1. Glide your mouse over the target Chinese characters
2. Right-click inside the Scan window
3. From the Scan menu, select **Word > Add Resource Entry**. Complete dialog box and click Done



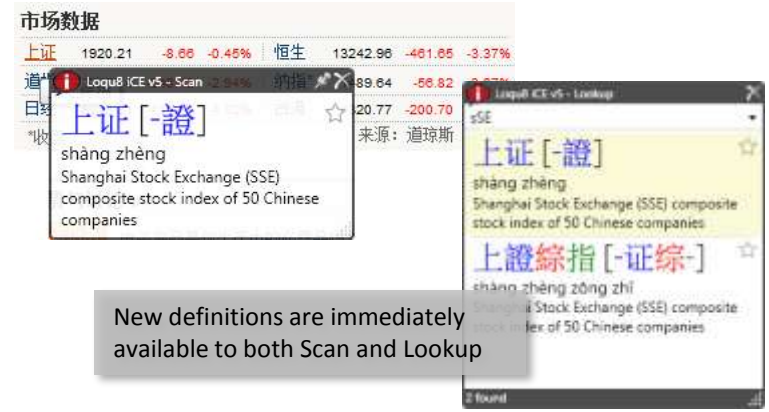
Additions and changes are immediately updated in both the LiveScan and Lookup windows.

Example: Adding 上证 for Shanghai Exchange

1. Open the web page or document
2. With your mouse, highlight the target Chinese characters. In [A], the Highlight window shows 上证 at the top and the definition of each character at the bottom
3. Click and highlight all the Chinese characters in the top of the window with your mouse (or Ctrl-A to select all)
4. As shown in [B], right-click and choose **Word**, then **Add Resource Entry**
5. Complete dialog box [C] and click Done. The Add Entry dialog will detect the Chinese text (simplified or traditional) and suggest an entry based on the current selection. Click Done to save and add your entry.

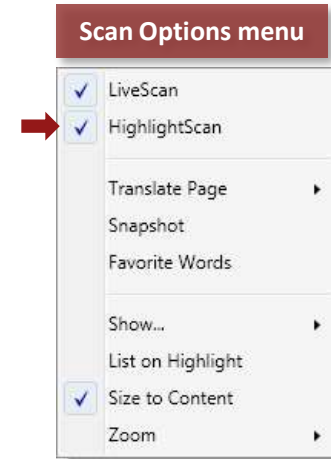
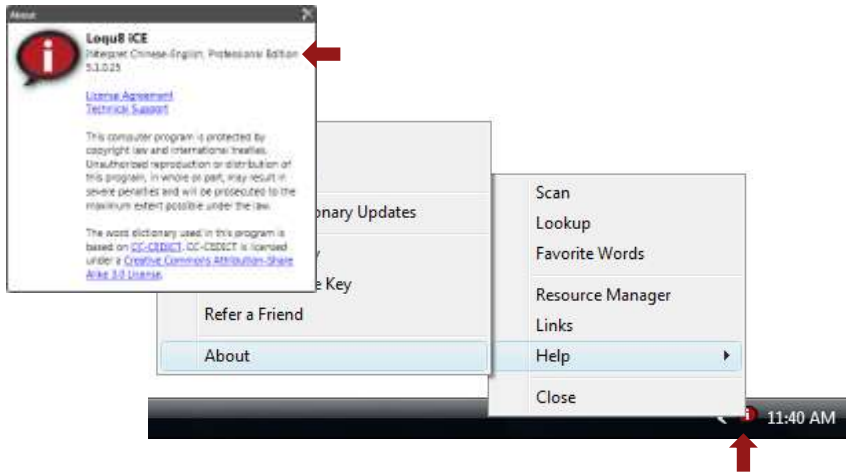


- **Traditional?** : Leave this box un-checked for simplified Chinese characters (China). Check this box if the entry is traditional Chinese (Hong Kong, Taiwan)
- **Traditional:** Enter (or paste) the traditional Chinese characters
- **Simplified:** Enter (or paste) the simplified Chinese characters
- **Definition:** Type your definition
- **Resource Filename:** Select a filename or type a new name



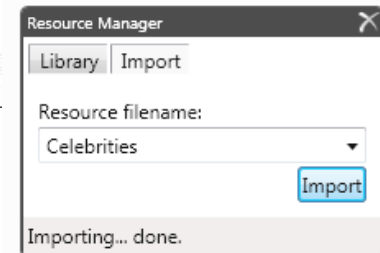
Professional Edition

The features described in this chapter apply to **iCE Professional Edition only**. Verify your product configuration from the System menu by selecting Help > About. If you are running the Standard Edition, contact Loqu8 for upgrade information. Click the **X** in the upper right corner to close this dialog box.



HighlightScan

Although you may define and edit the definitions of individual Chinese characters, most users will want to add definitions for multiple characters. Be sure that **HighlightScan** mode is checked (on). Right-click the black title bar of the Scan window to open the Scan Options menu.



Correcting Errors

- **Simp-trad lengths should match up.**

The number of characters for both simplified and traditional Chinese should match. For example, if there are 2 simplified characters, then there should be 2 traditional characters



New entries, like celebrity names Britney Spears and Tom Cruise, can be added into a **resource** called *Celebrities*. You may create many different resources to help organize your entries. The iCE Resource Manager gives you the power to:

- Selectively enable or disable (hide) all the entries in a resource
- Export resources into a text file that can be shared, archived or used in other applications, including flashcard learning programs
- Import new resources developed by other iCE Professional Edition users

Since iCE saves resources into an open standard text file, all the entries may be edited using Windows Notepad or word processor in text mode.

Tip: Sample resource files may be downloaded from the Loqu8 website.

Example: Britney Spears

Whenever you come across Chinese characters or words that are unknown to iCE, you can **add** a new resource entry:

- Highlight the characters and choose Add Resource Entry.
- Complete the information in the dialog box and save your entry by clicking on Done.

Import up to **10,000 entries** at one time. Each resource can hold over 100,000 entries, but you will find it more convenient to organize entries into multiple resources instead of one very large resource.

Add Resource Entry

Resource Manager

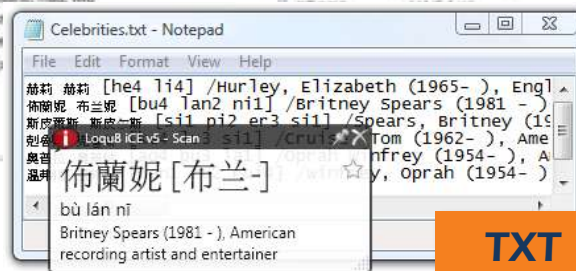
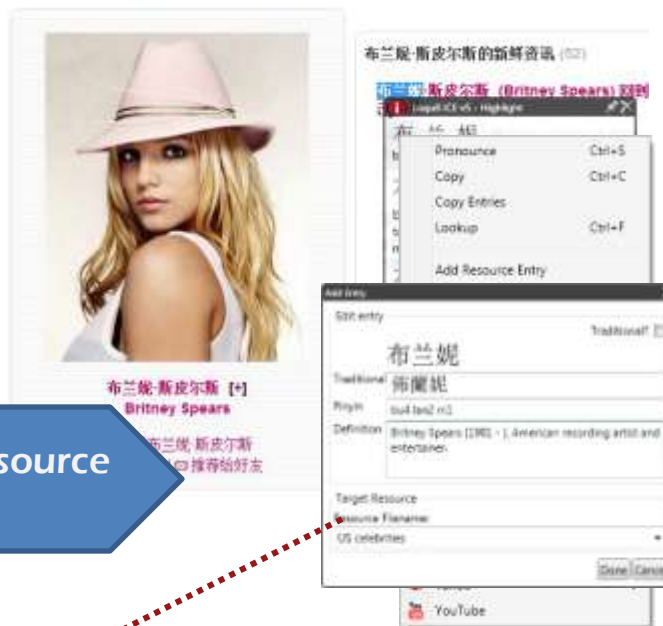


Resource

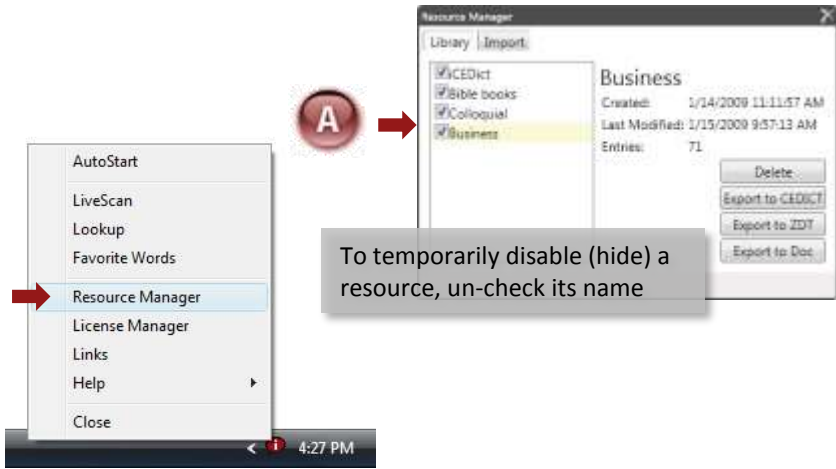
Celebrities

Import/Export

Export your new entries into flashcard programs as a quick study tool



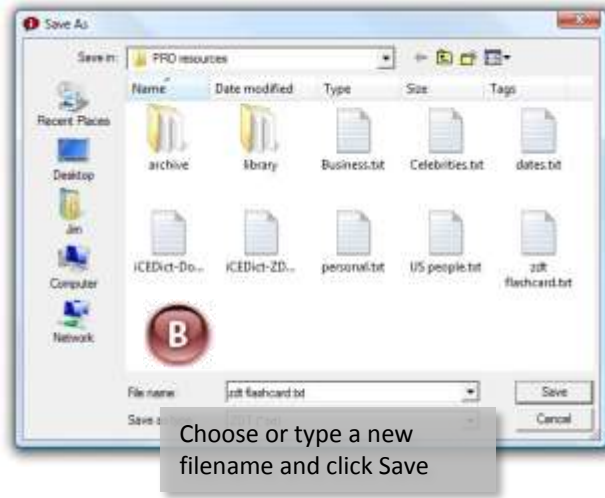
TXT



Loqu8 ICE manages resources (or definitions) with the Resource Manager. From the iCE System menu, open the Resource Manager. The first tab, Library, allows you to enable/disable, export and delete a resources internal to iCE.

Enable/Disable: Check the box of the resource to enable within iCE (including LiveScan and Lookup) [A]. To hide this set of resources, un-check the resource name. Use Delete (described below) to remove the resource from the program.

Export: Backup and share your resources with this function. Highlight the resource name and click Export to CEDICT, ZDT or DOC. Loqu8 ICE's native format follows the CEDICT convention. Choose ZDT to share files with flashcard programs compatible with ZDT. To view the resources in most word processors (like Microsoft Word), choose DOC. In the Save As dialog [B], enter a file name and the resource will be saved into a formatted text file. You may edit these files using Windows Notepad or other text editor



Delete: Highlight the resource name and click Delete to remove this resource from the program [C]. The text file will still be available to your operating system; it is not deleted from the disk.

Importing Resource Files

The Resource Manager's second tab, Import, allows you to insert information from an external file into a named resource. Use the drop-down list to select an existing resource name and click Import. Entries from the text file will be added into the specified resource.

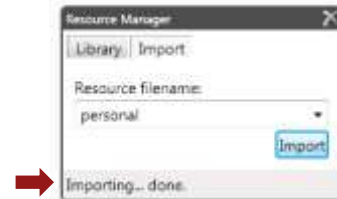
Your resource file must be compatible with one of the three **text** formats (CEDICT, ZDT or DOC). Microsoft Word files (with .DOC file extensions) are not directly support. See Appendix E for additional information on these formats.

Tip: To create a **new** resource, just type a new name. To **delete** a resource, click on the Library tab, highlight the name and click Delete.

Editing Multiple Definitions

The easiest way to change (edit or delete) multiple definitions is to export the resource in CEDICT format, modify the corresponding file and import the changes back into iCE as a resource.

1. From the Resource Manager, select the resource name and click **Export to CEDICT**
2. Open the text file using Windows Notepad or other text editor. If you are using a word processor, be certain to save the file as an ASCII text file
3. Carefully make your changes. Avoid adding or deleting any special symbols, like square brackets, [], and slashes, //
4. Save your changes into a new filename, like **newresource.txt**
5. From the Resource Manager, click on the Import tab. Type a new resource name, like **NewResource**
6. Click Import and select your new filename (**newresource.txt**). Each iCE resource can hold many thousands of entries, but you must import no more than 10,000 entries at a time. For very large files, contact Loqu8 for your custom requirements.



The bottom status line shows "done" when the process is completed

iCE will show all active definitions in the LiveScan instant translation window. If your resources have duplicate entries, then all will appear. This is a good way to check your work. If your changes are satisfactory, then disable iCEDict by unchecking that resource name from the Library.

Consolidating Multiple New Entries

Tip: Save all your new entries into **one** personal resource (e.g., **personal**, the default name).

To consolidate your entries into one resource:

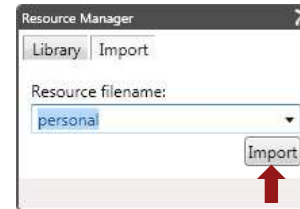
1. Export personal into a file with a name like personal.txt
2. While editing personal.txt, insert new entries into the bottom of the file. This makes it easier for you to keep track of your changes. iCE will index and sort all entries; you do not need to sort the entries in the file
3. Save your changes and import them into a new resource (e.g., Personal)

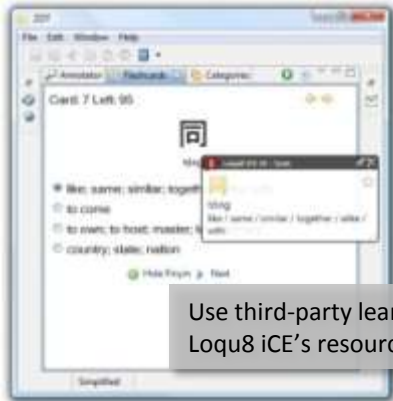
If you are making many changes, divide your entries into text files of up to 10,000 entries. You may import multiple files into the same resource.

Tip: Need help understanding the Chinese characters inside the text file? Be sure to turn on iCE LiveScan and let the program show you instant translations! When there are spaces between characters, iCE will show you the meaning of each character individually.



Use iCE to show you instant Chinese-English translations while you edit the text file





Use third-party learning tools with Loqu8 ICE's resource files



Loqu8 iCE works with popular language learning tools, including ZDT Language Learner. Here's how to share resources between iCE and ZDT.

- Start ZDT and select the **Categories** tab
- Choose an existing category or click **New**, enter a name and click Finish [A]

Import into ZDT

1. Click **Import**
2. In the Import Options dialog [B], navigate to the Loqu8 iCE resource file (e.g., personal.txt)
3. Accept the default import options : import format zdt, encoding utf-8, use definitions from imported file
4. Click Finish to complete the importation



Import flashcard lists with definitions from iCE to ZDT

Export from ZDT

1. Click **Export**
2. In the Export Options dialog [C], enter a new or existing resource file name (e.g., personal.txt)
3. Accept the default export options : export format zdt
4. Click Finish to complete the exportation



Export flashcard lists to iCE in ZDT format

APPENDICES



5 Tips for Learning Anything

1. Have a genuine interest and pay attention
2. Understand the full meaning
3. Engage your senses: visual, audio and more (if possible)
4. Link new things with old. Use what you know to link with what you want to remember
5. Apply this to your environment. How will you use what you've just learned?

A.	Technical Support	51
B.	Windows Vista Tips	52
C.	Windows XP Tips	53
D.	Download Security	55
E.	iCE Import Formats	56
F.	Removing iCE	57
G.	Glossary	59
H.	License Agreement and Warranty	60
I.	About Loqu8, Inc.	63

Technical Support

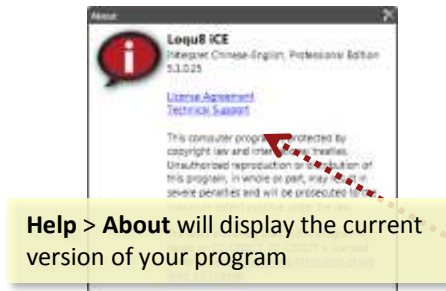
Loqu8 provides extensive support through telephone and email for all customers with an annual maintenance contract. Contact your Loqu8 sales representative for details.

Free technical support is also available for all users through the Loqu8 public forums. Post your questions and our engineers will respond promptly. You may find it helpful to locate your version number of the program. From the system menu, select **Help > About**

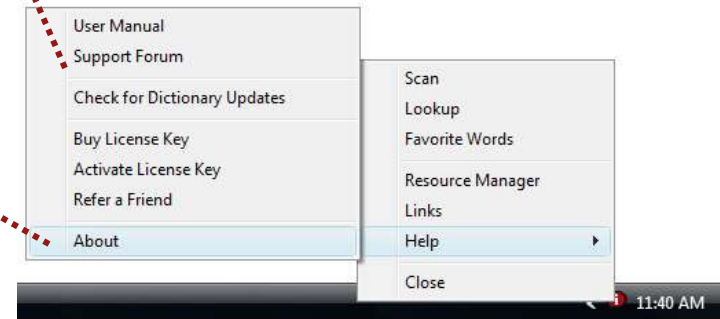
- **Forum**
<http://forums.loqu8.com/>
- **Frequently Asked Questions (and Answers)**
<http://www.loqu8.com/support/faq.htm>
- **Documentation**
http://www.loqu8.com/products/resources/iCE_5/documentation.htm
- **Program Updates**
After iCE is installed, the program will use a proprietary update mechanism to install updates. If your license has expired, you may not receive any updates. To manually check for updates, see:
<http://www.loqu8.com/products/downloads.htm>



Check the **Technical Support Forum** for the fastest, free support for iCE



Help > About will display the current version of your program



Windows Vista Tips

Unified Chinese Fonts

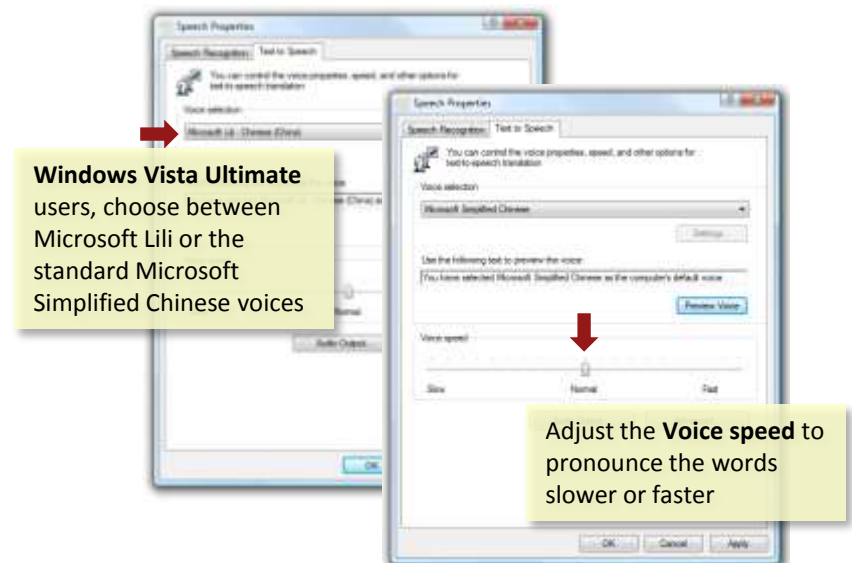
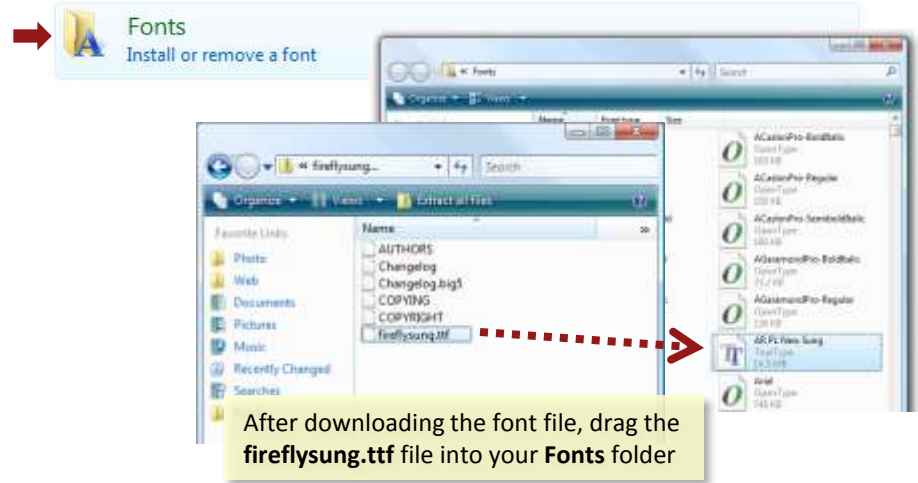
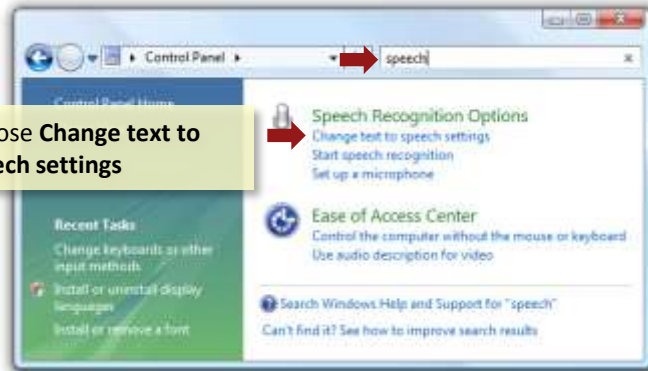
AR PL New Sung is a high-quality TrueType font that supports Traditional and Simplified Chinese plus crisp (no anti-aliased blurring) bitmaps for on-screen displays. This free download is available at:

<http://www.loqu8.com/products/download-newsung.htm>

Adjusting Pronunciation

iCE uses the Microsoft's text-to-speech engine to pronounce Mandarin Chinese. This voice may be adjusted to speak slower or faster. To adjust this setting:

1. Open the **Control Panel** and type **speech** into the search box at the top right.
2. Click on **Change text to speech settings**.
3. In the Speech Properties box, adjust the slider for the **Voice speed**. If you have Windows Vista Ultimate, you may also change the voice to **Microsoft Lili** (female).
4. Click **OK** to accept the changes.



East Asian Languages Pack

Microsoft Windows XP supports Chinese through the East Asian languages pack. This language pack **must be installed** to view Chinese fonts, etc. To install these files:

1. Open the Windows **Control Panel**
2. Choose **Regional and Language Options** and select the **Languages** tab
3. Check the box for **Install files for East Asian languages** and click **OK**
4. You will be prompted for your *Windows XP installation CD*. About 230 MB of disk space is required.

Windows XP Service Pack 2

Before installing any software, be sure to have your system updated to at least Service Pack 2. This free update is available at:

<http://www.loqu8.com/products/downloads.htm>

.NET Framework

You may also need to update your system with *Microsoft .NET Framework 3.0*.

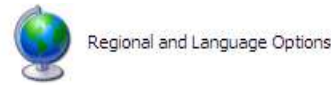
This free update is available at:

<http://www.loqu8.com/products/downloads.htm>

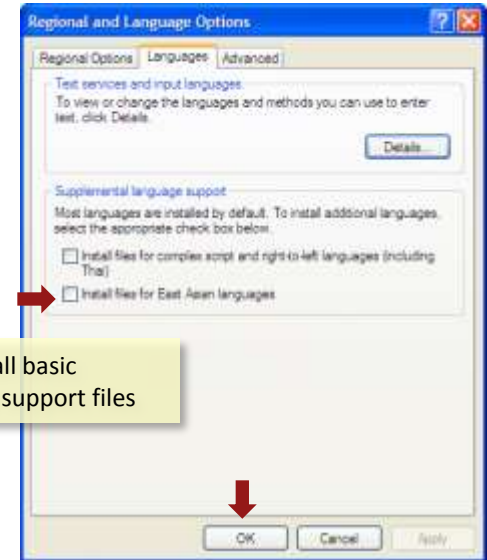
Unified Chinese Fonts

AR PL New Sung is a high-quality TrueType font that supports Traditional and Simplified Chinese plus crisp (no anti-aliased blurring) bitmaps for on-screen displays. This free download is available at:

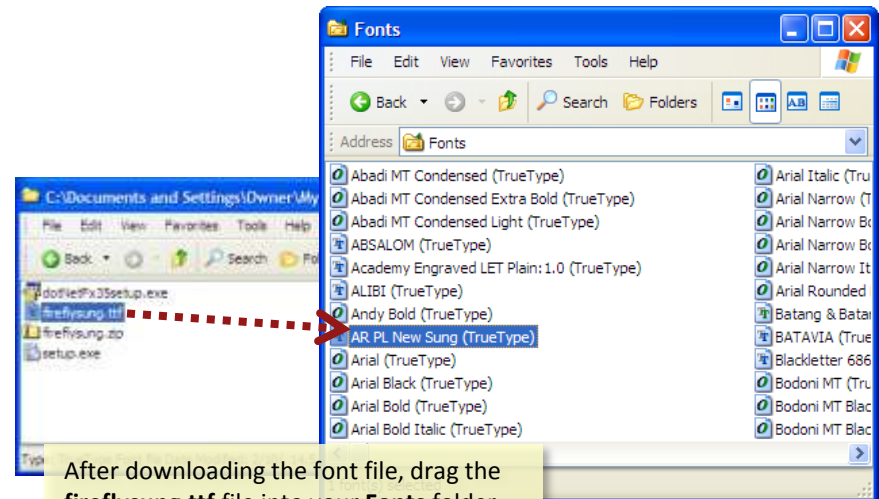
<http://www.loqu8.com/products/download-newsung.htm>



Regional and Language Options



This option will install basic Microsoft fonts and support files



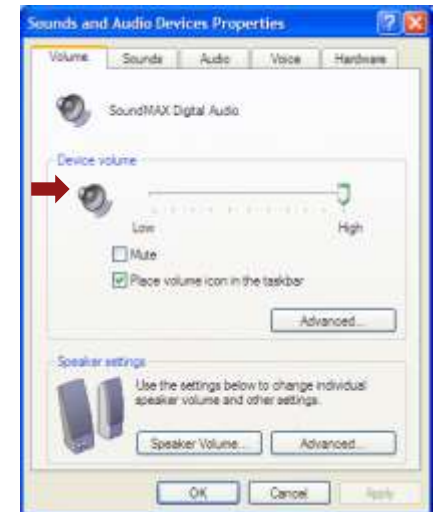
After downloading the font file, drag the **fireflysung.ttf** file into your **Fonts** folder

Adjusting Sounds and Speech

Setting Sound Volume

If you are not hearing iCE Pronunciations, then you may need to adjust your speakers/headphones. In addition, check the volume settings:

1. From the Windows Control Panel, open **Sounds and Audio Devices**.
2. Verify that the **Device volume** is set appropriately. Make sure the Mute box is **not** checked.
3. You may also set individual speaker volume.
4. When all your changes have been made, click **OK**.



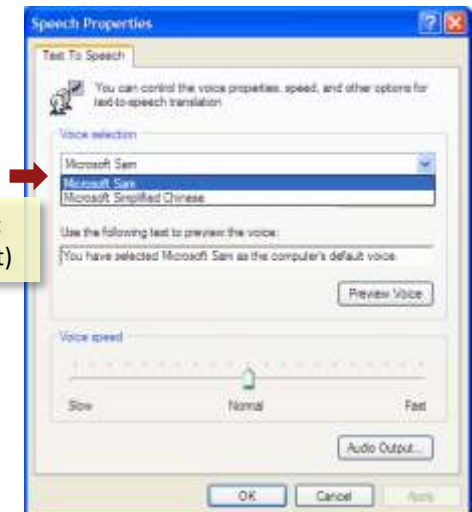
Configuring Speech Properties

You may also need to set the Text to Speech settings:

1. From the Windows Control Panel, open **Speech**.
2. Verify that the Voice selection is **Microsoft Simplified Chinese**.
3. If necessary, adjust the **Voice speed**.
4. When all your changes have been made, click **OK**.



Verify that the Voice is **Microsoft Simplified Chinese** (or equivalent)



Loqu8 is concerned with the integrity of our software products. To prevent inadvertent downloading and installing malicious software from the Internet, Loqu8 offers two options:

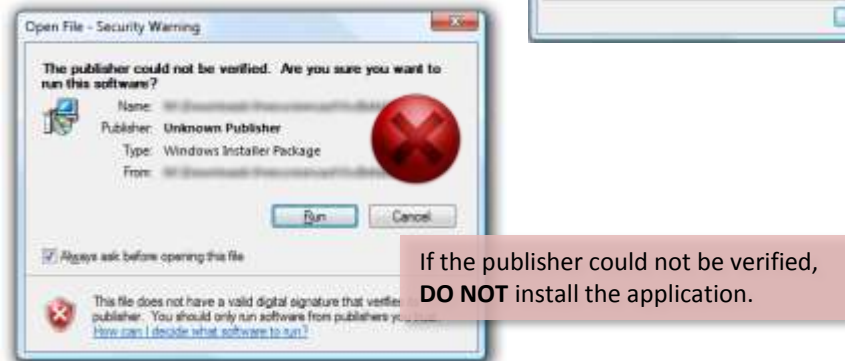
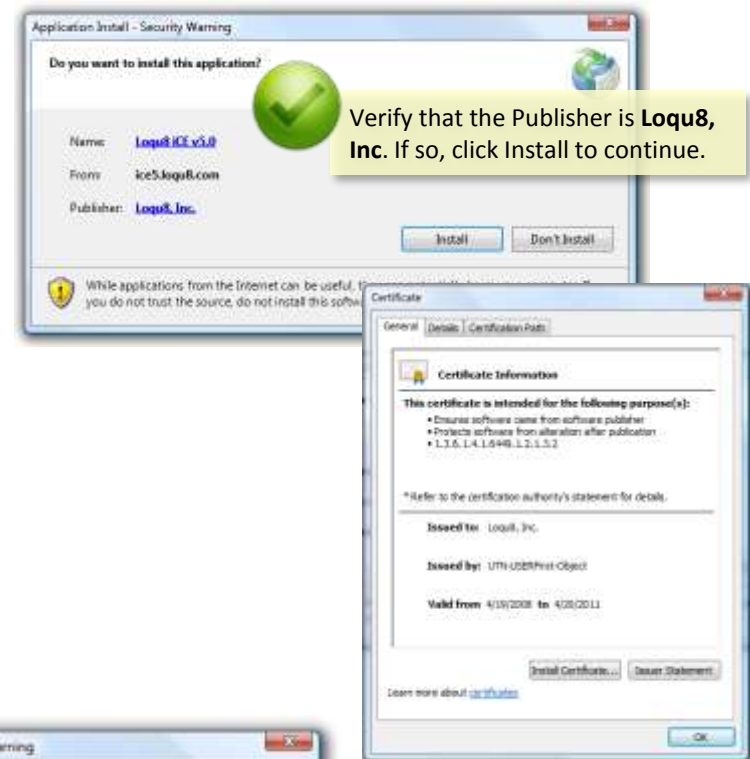
- **Signed software** (setup.exe). Software is sealed with Authenticode secure code signing. By relying on digital certificates and specifications (Public Key Cryptography Standards (PKCS) #7 & #10, X.509 (certificate specification), Secure Hash Algorithm (SHA) and MD5 hash algorithms. For more information, see: <http://www.microsoft.com/technet/archive/security/topics/secaps/authcode.aspx?mfr=true>

Note: Code signing is only supported for executables (ICE); documentation and fonts are not signed.

During installation, if you **don't** see Loqu8, Inc. as the publisher, click **Don't Install**. Go to <http://www.loqu8.com/products/download-intce.htm> to download the software directly from Loqu8.

- **Direct distribution** by CD in the United States, Canada and selected countries

After iCE is installed, the program will use a proprietary update mechanism to install updates. If your license has expired, you may not receive any updates.



iCE Professional Edition imports and exports words and definitions from a text file with formatting for CEDICT, ZDT or DOC. Regardless of formatting, the file extension should be .TXT and must contain only 8-bit Unicode (UTF-8) characters.

CEDICT Resource File Format

Although other formats are supported, this format is easier to edit and modify. The four fields are:

- Simplified Chinese
- Traditional Chinese
- [Pinyin]
- /Definition/

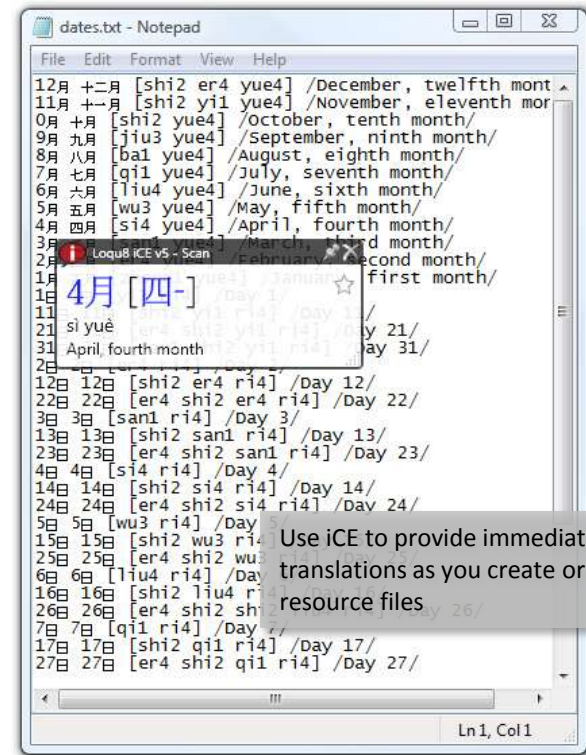
with each field separated by a space. The pinyin (with tone numbers) is enclosed in square brackets, “[” and “]”. The English definition is delimited by slash (“/”). For example:

```
上证综指 上證綜指 [shang4 zheng4 zong1 zhi3] /Shanghai Stock Exchange (SSE) composite stock index of 50 Chinese companies/
```

Where:

- Simplified Chinese: 上证综指
- Traditional Chinese: 上證綜指
- [Pinyin]: [shang4 zheng4 zong1 zhi3]
- /Definition/: /Shanghai Stock Exchange (SSE) composite stock index of 50 Chinese companies/

Loqu8’s adaptation of the CEDICT file format is subject to change as new features and incorporated into the design. Contact Loqu8 for the latest information on developing custom resources or other add-ins.



Use iCE to provide immediate translations as you create or edit resource files

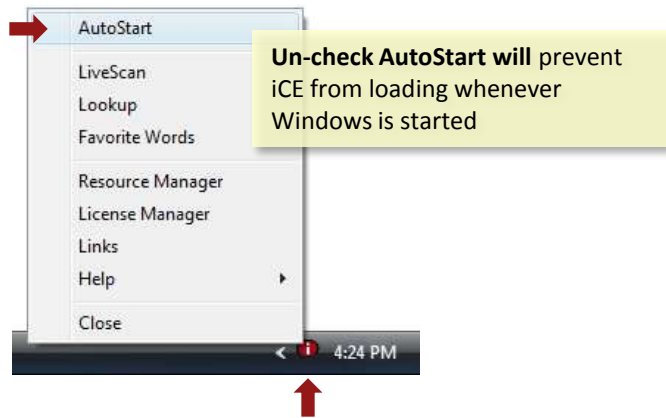
ZDT and DOC Formats

- **ZDT** is a modified version of CEDICT. Entries are delimited with tabs and Pinyin phonetics do not require square brackets
- **DOC** is an expanded version of CEDICT. Entries are also delimited with tabs. Pinyin is expressed in both number and tone marks. Bopomofo is also included

When Loqu8 iCE is installed, it is configured to run every time you start-up your system. The iCE icon will be visible in your system tray (normally, the bottom right corner of your window). If you prefer to have iCE run only when need it, simply move the iCE shortcut from your Windows Startup folder to your Desktop

Stopping iCE AutoStart

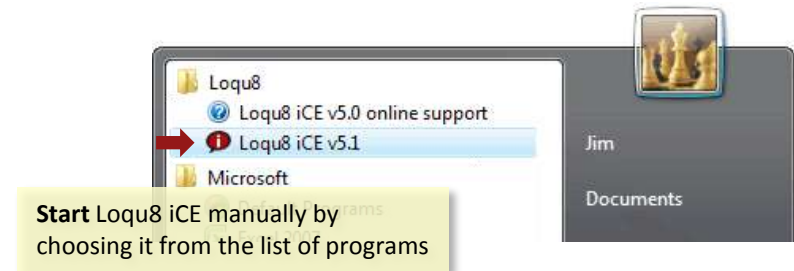
1. Right-click the iCE icon in the system tray
2. Un-check **AutoStart**

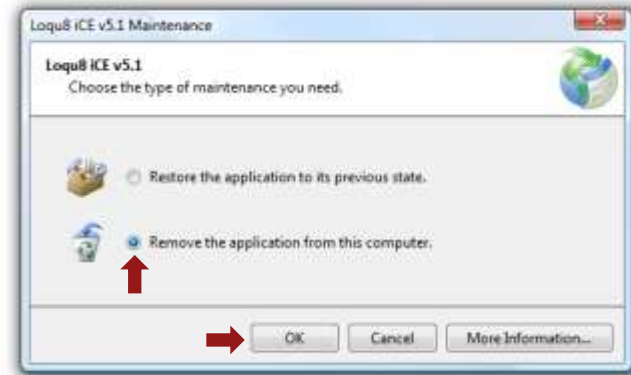


Starting iCE From Windows Start Menu

If you've removed (or closed iCE), you can start iCE by selecting it from the Loqu8 program folder.

1. Click the Windows Start (or logo) button
2. Click **All Programs** to view all program folders
3. Click and open **Loqu8** folder
4. Click and start **Loqu8 iCE v5**





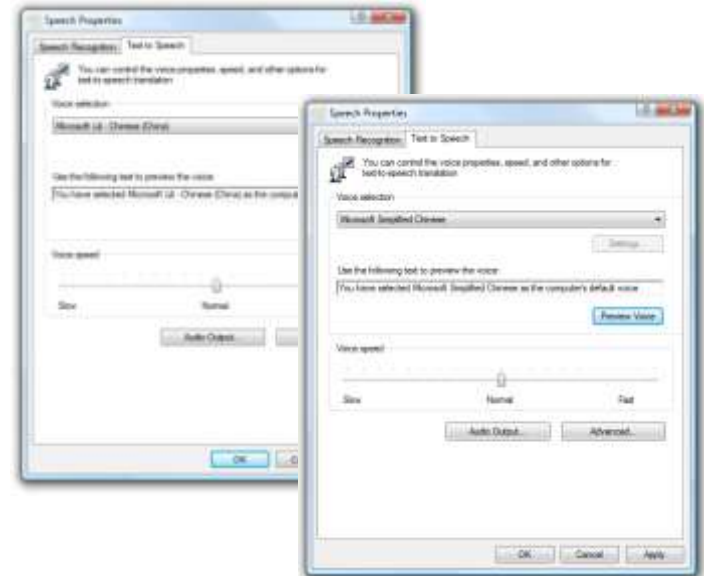
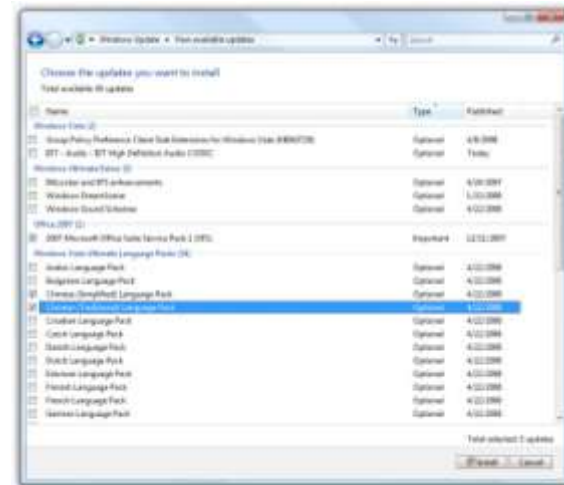
To remove iCE from your system, use the Windows Uninstall procedure:

1. From the Windows Control Panel, choose **Uninstall a program**.
2. Click on **Loqu8 iCE v5** icon
3. Click on **Uninstall/Change** button
4. When asked for the type of maintenance you need, select **Remove the application from this computer**
5. Click **OK** to uninstall iCE



To remove Chinese Text-to-Speech capabilities, select **Microsoft Chinese TTS**. Click Uninstall/Change and follow the steps 4-5 for this program

- **HighlightScan:** Select a range of Chinese text and iCE opens a special Scan window that displays all the Chinese text in the top portion and translations in the bottom portion
- **Language Interface Pack (LIP):** For Microsoft, a translation of the most widely used areas of the Windows user interface. A LIP is used with a parent language (like English). When compared with MUI, LIP is freely available for download, but the functions are limited
- **LiveScan:** Loqu8 iCE can continuously scan text and display instant translations using this feature. To toggle this function on/off, double-click on the iCE icon in the system tray
- **Multilingual Interface Pack (MUI):** For Microsoft, a translated version of most of the user interface. These are a set of language-specific resource files. For users of Windows Vista Ultimate, download MUIs with Windows Update; Vista Enterprise users must contact your system administrator; other editions of Vista (Home Basic, Home Premium and Business) are not supported. Users of Windows XP Pro (not Home), Windows Server 2003 and others can download MUIs from Microsoft; not supported on Windows 9x/Me or Windows XP Home
- **Resource:** (iCE Professional only) A custom list of words and definitions
- **Text to Speech (TTS):** Loqu8 iCE supports Microsoft Lili (Windows Vista Ultimate only) and Microsoft Simplified Chinese (Windows Vista and XP) voices



These license terms are an agreement ("Agreement") between Loqu8, Inc. ("Loqu8") (or based on where you live, one of its affiliates) and you. Please read them. They apply to the software that accompanies these license terms, which includes the media on which you received it, if any. The terms of this Agreement also apply to any Loqu8 updates, supplements, Internet-based services, and support services for the Loqu8 iNterpret Chinese-English (iCE) software, whether provided by Loqu8 or any of its affiliates, unless other terms accompany those items. If so, those terms apply. IF YOU DO NOT ACCEPT THE LICENSE TERMS, DO NOT USE THE SOFTWARE. INSTEAD, RETURN THE SOFTWARE TO YOUR PLACE OF PURCHASE FOR A REFUND OR CREDIT WITHIN THIRTY DAYS OF PURCHASE. If you cannot obtain a refund there, contact Loqu8 or the Loqu8 affiliate serving your country for information about Loqu8's refund policies. USING THE SOFTWARE ALSO OPERATES AS YOUR CONSENT TO THE TRANSMISSION TO LOQU8 AND/OR ITS AFFILIATES OF CERTAIN INFORMATION DURING ACTIVATION, VALIDATION AND FOR INTERNET-BASED SERVICES. IF YOU COMPLY WITH THESE LICENSE TERMS, YOU HAVE THE RIGHTS BELOW FOR EACH LICENSE YOU ACQUIRE.

1. OVERVIEW. These license terms permit installation and use of one copy of the software on one device (the "Device"), along with other rights, all as described below.

2. INSTALLATION AND USE RIGHTS.

- a. Licensed Device. You may install and use one copy of the software on the licensed Device. A hardware partition or blade is considered to be a separate Device.
- b. Separation of Components. The software and all included components are licensed as a single unit, and you may not separate the components and install them on different devices.
- c. Licensed User. Except as set forth below with respect to the Home Rights Edition, the software is licensed for use by one single user (the "User").
- d. Home Use Rights Edition. If you purchased a Home Use Rights edition of the software, you may install and use the software on multiple Devices, provided that all such Devices are located within the same residence (the "Residence"). Your Home Use Rights edition may be used by multiple users, provided that all such users reside at the Residence ("Home Use Users"). Usage is restricted to no more than 10 devices or 10 users.
- e. Academic Edition. If you purchased an Academic Edition of the software, you may install and use the software on multiple devices within your academic institution, solely for use by the User and not by other individuals.

3. ADDITIONAL LICENSING REQUIREMENTS AND/OR USE RIGHTS.

- a. Remote Access. The User of the licensed Device may access and use the software installed on the licensed Device remotely from any other device. You may allow other users to access the software only for the purpose of providing you with support services. You do not need additional licenses for such access. Except as set forth above with respect to the Home Use Rights edition, no other person may use the software under the same license for any other purpose.
- b. Multiplexing. Hardware or software you use to pool connections, or reduce the number of devices or users that directly access or use the software (sometimes referred to as "multiplexing" or "pooling"), does not reduce the number of licenses you need.
- c. Trial and Conversion. Some or all of the software may be licensed on a trial basis. Your rights to use trial software are limited to the trial period. The trial software and length of the trial period are set forth during the activation process. You may have the option to convert ("Convert") your trial rights to subscription or perpetual rights ("Conversion"). Conversion options will be presented to you at the expiration of your trial period. After the expiration of any trial period without Conversion, certain features of the trial software may be disabled or performance degraded, and the software may not be fully functional.
- d. Subscription Software. If you licensed the software on a subscription basis, your rights to use the software are limited to the subscription period. You may have the option to extend your subscription or convert to a perpetual license. If you extend your subscription, you may continue using the software until the end of your extended subscription period. See the software activation screens or other accompanying materials for subscription details. After the expiration of your subscription, most features of the software will stop running. At that time you can continue to open, view and print any documents you created with the software.

4. MANDATORY ACTIVATION. Activation associates the use of the software with a specific Device. During activation, the software will send information about the software and the Device to Loqu8. This information includes the user account information, domain, version, the license version, language and the product ID of the software, Internet protocol address of the Device and information derived from the hardware configuration of the Device. BY ACTIVATING OR USING THE SOFTWARE, YOU CONSENT TO THE TRANSMISSION OF THIS INFORMATION. Your rights to use the software will be limited until the software is activated. This is to prevent its unlicensed use. THE SOFTWARE MAY PERIODICALLY REMIND YOU TO ACTIVATE UNTIL YOU DO. After initial activation, some changes to your computer components or the software may require you to reactivate the software.

5. VALIDATION.

- a. Upon activation or Conversion, or from time-to-time afterward, the software may require download of the validation feature of the software ("Validation"). The Validation process verifies that the software has been activated and is properly licensed. Validation may also permit you to use certain features of the software or to obtain additional benefits.
- b. During Validation, the software will send information about the software to Loqu8. This information includes the user account information, domain, IP address, CPU and operating system, version of the software and the product key. Loqu8 does not use the information to identify or contact you. BY USING THE SOFTWARE, YOU CONSENT TO THE TRANSMISSION OF THIS INFORMATION.
- c. If the software is not properly licensed, the functionality of the software may be affected. In addition, you may need to reactivate the software, or receive reminders to obtain a properly licensed copy of the software, or you not be able to obtain certain updates, upgrades or services from Loqu8.
- d. You may only obtain updates or upgrades for the software from Loqu8 or authorized sources.

6. INTERNET-BASED SERVICES. From time to time, Loqu8 may provide Internet-based services ("Internet Services") for use with the software, such as additional databases. These Internet Services may be subject to additional charges or fees. Except as otherwise noted in materials accompanying a service, Loqu8 may change or cancel them at any time, for any reason in Loqu8's sole discretion.

- a. Consent for Internet-Based Services. The Internet Services may require that the Device connect to Loqu8 or service provider computer systems over the internet. In some cases, you will not receive a separate notice when they connect. BY USING THESE INTERNET SERVICES, YOU CONSENT TO THE TRANSMISSION OF THIS INFORMATION. Loqu8 does not use the information to identify or contact you.
Computer Information. The Internet Services use Internet protocols, which send to the appropriate systems computer information, such as your IP address, the type of operating system, browser and name and version of the software you are using, and the language code of the device where you installed the software. Loqu8 uses this information to make the Internet-based services available to you.
- b. Misuse of Internet-based Services. You may not use the Internet Services in any way that could harm them or impair anyone else's use of them. You may not use the Internet Services to try to gain unauthorized access to any service, data, account or network by any means.

7. SCOPE OF LICENSE. The software is licensed, not sold. This agreement only gives you some rights to use the software. Subject to the terms of this Agreement, Loqu8 hereby grants the User or the Home Use Users, as applicable, a limited, personal, non-sublicensable, non-transferable, royalty-free, nonexclusive license to use the software and any associated documentation, only for such user's personal, non-commercial use. In using the software, you must comply with any technical limitations in the software that only allow you to use it in certain ways.

You may not: work around any technical limitations in the software; reverse engineer (except and only to the extent that applicable law expressly permits, despite this limitation), decompile, disassemble, attempt to discover the source code or structure, sequence and organization of, or remove any proprietary notices from the software; publish the software for others to copy; use the software in any way that is against the law; copy, distribute, rent, lease, timeshare, operate a service bureau with or lend the software; or use the software for commercial purposes or for the benefit of a third party, such as software hosting services. As between you and Loqu8, all title, ownership rights, and intellectual property rights in and to the software, and any copies or portions thereof, shall remain in Loqu8 and its suppliers or licensors. The software is protected by the copyright laws of the United States and international copyright treaties. This Agreement does not give you any rights not expressly granted herein.

8. BACKUP COPY. You may make one backup copy of the media. You may use it only to reinstall the software.

9. DOCUMENTATION. You may copy and use the documentation solely for your internal, reference purposes.

10. NOT FOR RESALE SOFTWARE. You may not sell software marked as "NFR" or "Not for Resale."

11. ACADEMIC EDITION SOFTWARE. You must be a "Qualified Educational User" to use software marked as "Academic Edition" or "AE." If you do not know whether you are a Qualified Educational User, contact Loqu8 or the Loqu8 affiliate serving your country.

12. HOME USE RIGHTS SOFTWARE. You must be a "Home Use Rights User" to use software marked as "Home Use Rights Edition."

13. UPGRADE OR CONVERSION. To upgrade or Convert software, you must first be licensed for the software that is eligible for the upgrade or Conversion. Upon upgrade or Conversion, this Agreement takes the place of the agreement for the software you upgraded or Converted from. After you upgrade or Convert, you may no longer use the earlier version of the software you upgraded or Converted from.

14. TERMINATION. You may terminate this Agreement and the license granted herein at any time by destroying or removing from all computers, networks, and storage media all copies of the software. Loqu8 may terminate this Agreement and the license granted herein immediately if you breach any provision of this Agreement. Upon receiving notice of termination from Loqu8, you will destroy or remove from all computers, networks, and storage media all copies of the software.

15. EXPORT RESTRICTIONS. The software is subject to United States export laws and regulations. You shall comply with all export laws and restrictions and regulations of the Department of Commerce, the United States Department of Treasury Office of Foreign Assets Control ("OFAC"), or other United States or foreign agency or authority, and not to export, or allow the export or re-export of the software in violation of any such restrictions, laws or regulations. By downloading or using the software, You are representing and warranting that you are not located in, under the control of, or a national or resident of any restricted country or on any such list.

16. SUPPORT SERVICES. This Agreement does not entitle you to any support, upgrades, patches, enhancements, or fixes for the Software (collectively, "Support"). Any such Support for the software that may be made available by Loqu8 shall become part of the software and subject to this Agreement.

17. ENTIRE AGREEMENT. This agreement (including the warranty below), any addendum or amendment included with the software, and the terms for supplements, updates, Internet Services and support services that you use, are the entire agreement for the software and support services. If any provision of this Agreement is held to be unenforceable for any reason, such provision shall be reformed only to the extent necessary to make it enforceable.

18. DISPUTE RESOLUTION.

a. Applicable Law. This Agreement shall be governed by and interpreted in accordance with the laws of the state of California, without regard to its conflict of laws principles and without regard to the United Nations Convention on the International Sale of Goods.

b. Arbitration. Any dispute arising from or relating to the subject matter of this Agreement shall be finally settled by arbitration in San Francisco, California, using the English language in accordance with the Arbitration Rules and Procedures of the Judicial Arbitration and Mediation Service, Inc. ("JAMS") then in effect, by one or more commercial arbitrator(s) with substantial experience in resolving complex commercial contract disputes, who may or may not be selected from the appropriate list of JAMS arbitrators. If the parties cannot agree upon the number and identity of the arbitrators within fifteen (15) days following the Arbitration Date, then a single arbitrator shall be selected on an expedited basis in accordance with the Arbitration Rules and Procedures of JAMS. Any arbitrator so selected shall have substantial experience in the software industry. The arbitrator(s) shall have the authority to grant specific performance and to allocate between the parties the costs of arbitration (including service fees, arbitrator fees and all other fees related to the arbitration) in such equitable manner as the arbitrator(s) may determine. The prevailing party in the arbitration shall be entitled to receive reimbursement of its reasonable expenses (including reasonable attorneys' fees, expert witness fees and all other expenses) incurred in connection therewith. Judgment upon the award so rendered may be entered in a court having jurisdiction or application may be made to such court for judicial acceptance of any award and an order of enforcement, as the case may be. Notwithstanding the foregoing, each party shall have the right to institute an action in a court of proper jurisdiction for preliminary injunctive relief pending a final decision by the arbitrator(s), provided that a permanent injunction and damages shall only be awarded by the arbitrator(s). For all purposes of this Section 19, the parties consent to exclusive jurisdiction and venue in the United States federal Courts located in the Northern District of California.

19. LIMITATION ON AND EXCLUSION OF DAMAGES. EXCEPT FOR BODILY INJURY, (I) YOU MAY RECOVER FROM LOQU8 AND/OR ITS AFFILIATES ONLY DIRECT DAMAGES UP TO THE AMOUNT YOU PAID FOR THE SOFTWARE AND (II) UNDER NO CIRCUMSTANCES AND UNDER NO LEGAL THEORY, INCLUDING, WITHOUT LIMITATION, TORT, CONTRACT, STRICT LIABILITY, OR OTHERWISE, SHALL LOQU8 AND/OR ITS AFFILIATES BE LIABLE TO YOU OR ANY OTHER PERSON FOR ANY INDIRECT, SPECIAL, INCIDENTAL, OR CONSEQUENTIAL DAMAGES OF ANY CHARACTER INCLUDING, WITHOUT LIMITATION, DAMAGES FOR LOST PROFITS, LOSS OF GOODWILL, WORK STOPPAGE, ACCURACY OF RESULTS, COMPUTER FAILURE OR MALFUNCTION, OR DAMAGES RESULTING FROM YOUR USE OF THE SOFTWARE. SOME STATES OR JURISDICTIONS DO NOT ALLOW THE EXCLUSION OR LIMITATION OF INCIDENTAL OR CONSEQUENTIAL DAMAGES, SO THE ABOVE LIMITATION OR EXCLUSION MAY NOT APPLY TO YOU.

Limited Warranty

A. WARRANTY. Loqu8 warrants to you that the software will materially conform to Loqu8's then-current user documentation for the software for a period of one year after the date of purchase.

B. EXCLUSIONS FROM WARRANTY. This warranty set forth above does not cover problems caused by your acts (or failures to act), the acts of others, or events beyond Loqu8's reasonable control.

C. REMEDY FOR BREACH OF WARRANTY. LOQU8 WILL, AT LOQU8'S OPTION, REPAIR OR REPLACE THE SOFTWARE AT NO CHARGE. IF LOQU8 CANNOT REPAIR OR REPLACE THE SOFTWARE, LOQU8 WILL PROVIDE A REFUND FOR THE SOFTWARE. YOU MUST UNINSTALL THE SOFTWARE AND RETURN ANY MEDIA AND OTHER ASSOCIATED MATERIALS TO LOQU8 WITH PROOF OF PURCHASE TO OBTAIN A REFUND. THESE ARE YOUR SOLE AND EXCLUSIVE ONLY REMEDIES FOR BREACH OF THE LIMITED WARRANTY.

D. CONSUMER RIGHTS NOT AFFECTED. YOU MAY HAVE ADDITIONAL CONSUMER RIGHTS UNDER YOUR LOCAL LAWS, WHICH THIS AGREEMENT CANNOT CHANGE.

E. DISCLAIMER. THE WARRANTY SET FORTH ABOVE IS THE ONLY WARRANTY FROM LOQU8. EXCEPT AS SET FORTH ABOVE, EVERYTHING PROVIDED UNDER THIS AGREEMENT (WHETHER SOFTWARE, SERVICE OR OTHERWISE) IS PROVIDED "AS IS" WITHOUT WARRANTY OF ANY KIND AND LOQU8 DISCLAIMS ALL OTHER EXPRESS OR IMPLIED WARRANTIES, INCLUDING WITHOUT LIMITATION, ANY WARRANTY OF MERCHANTABILITY OR FITNESS FOR A PARTICULAR PURPOSE OR NONINFRINGEMENT. FURTHER, LOQU8 DOES NOT WARRANT RESULTS OF USE OR THAT THE SOFTWARE COMPONENTS OR SERVICES ARE BUG FREE OR THAT THEIR USE WILL BE UNINTERRUPTED. SOME STATES AND JURISDICTIONS DO NOT ALLOW LIMITATIONS ON HOW LONG AN IMPLIED WARRANTY LASTS, SO THE ABOVE LIMITATIONS MAY NOT APPLY TO YOU.

F. LIMITATION ON AND EXCLUSION OF DAMAGES FOR BREACH OF WARRANTY. THE LIMITATION ON AND EXCLUSION OF DAMAGES CLAUSE ABOVE APPLIES TO BREACHES OF THIS LIMITED WARRANTY. THIS WARRANTY GIVES YOU SPECIFIC LEGAL RIGHTS, AND YOU MAY ALSO HAVE OTHER RIGHTS WHICH VARY FROM STATE TO STATE. YOU MAY ALSO HAVE OTHER RIGHTS WHICH VARY FROM COUNTRY TO COUNTRY.

Loqu8's innovative **iNtuition™** knowledge management engine connects people with relevant information for a specific task. Empowering knowledge workers with “the right information @ the right time” allows organizations to be measurably more efficient and effective. Loqu8 is headquartered in Silicon Valley, USA.

For more information, visit: **www.loqu8.com**

Contact us by email at: **info@loqu8.com**

All Rights Reserved

Loqu8 may have patents, patent applications, trademarks, copyrights, or other intellectual property rights covering subject matter in this document. Except as expressly provided in any written license agreement from Loqu8, the furnishing of software or documentation does not give you any license to these patents, trademarks, copyrights, or other intellectual property.

Disclaimer

While every effort has been made to ensure that the information contained in this document is accurate and complete, no liability can be accepted for omissions or errors. Loqu8 reserves the right to change the specifications and functions of the software described herein at any time without prior notice.

Loqu8 makes no warranties for damages resulting from corrupted or lost data due to a mistaken operation or malfunction of the software.



Trademarks

Loqu8, iCE and iNtuition are trademarks of Loqu8, Inc. in the United States and other countries.

Microsoft, Windows and Internet Explorer are registered trademarks or trademarks of Microsoft Corporation in the United States and/or other countries. All other marks are trademarks or registered trademarks of their respective companies.



Loqu8 ICE, Version 5.1

User's Guide - Professional/Standard Editions

Revision D



I C E V 0 5 1 U G