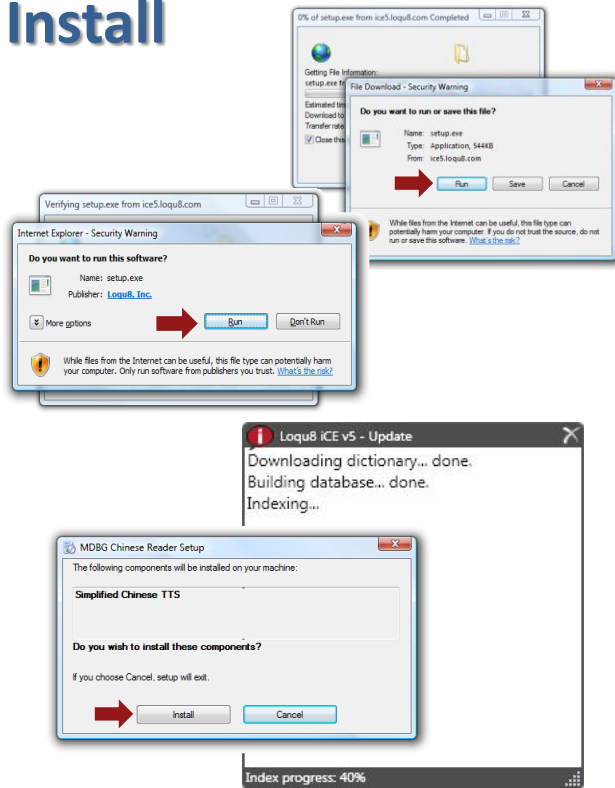


Install



To install Loqu8 iCE:

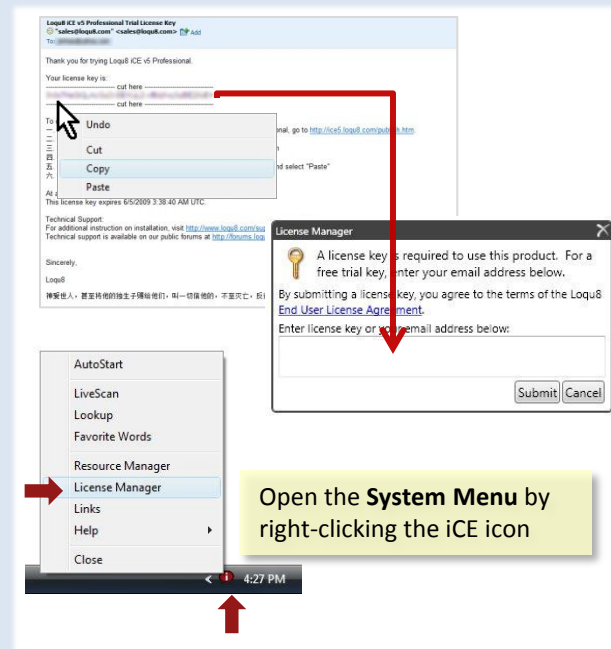
1. Download the software from <http://www.loqu8.com/products/download-iCE5-Pro.php>
2. Click **Run** (or **Save**) the application file
4. Click **Install** and follow the on-screen instructions

System Requirements

- Microsoft Windows 7, Vista, XP or Server 2008
- Microsoft .NET 4 (or 3.5)*
- AR PL New Sung font with both traditional and simplified characters (recommended*)

* **TIP:** Get these free downloads from <http://www.loqu8.com/products/download.htm>

Activate



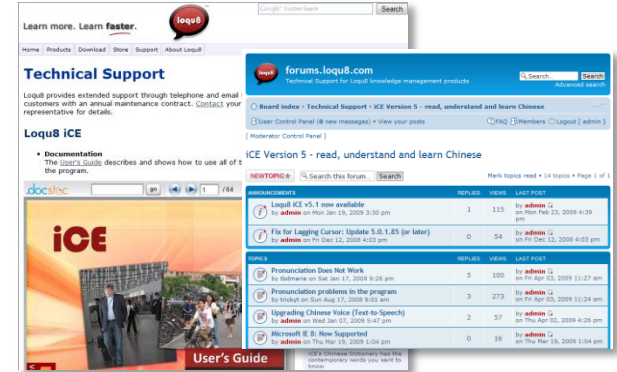
To activate Loqu8 iCE:

1. From your Windows system tray (typically, bottom right corner of your display), right-click the iCE icon, open the Help menu and choose **License Manager**
2. Inside the License Manager dialog box, enter your license key. **TIP:** copy and paste the 44-character key into the License Manager
3. Click **Submit**. In about a minute, your license will be activated

Note

- Loqu8 iCE starts every time you turn on Windows. To disable, un-check AutoStart from the iCE system menu
- See the *Installation Notes for Window 7* and the 64-page *User's Guide* from: <http://www.loqu8.com/products/documentation.htm>

Support



iCE is supported by Loqu8 and a community of users. Visit the support center at <http://www.loqu8.com/support/techsupport.htm>

You'll find answers to frequently asked questions (FAQ), public forums and more.

Uninstall



To uninstall Loqu8 iCE:

1. In Control Panel, select **Uninstall a program**
2. Select **Loqu8 iCE** and click **Uninstall/Change**
3. Choose **Remove the application from this computer**
4. Click **OK**